



# OPUNAKE & COASTAL NEWS

Vol. 22 No. 1 January 26, 2012  
WWW.opunakecoastalnews.co.nz  
Published every  
Thursday Fortnight

Phone and Fax 761-7016  
A/H 761-8206  
for Advertising and Editorial  
ISSN 1171-0624

## Inside...



We farewell a woman of  
substance page 5



Brilliantly clever, but  
diabolical page 9



Visiting Christchurch  
pages 11 and 12.



Sounds on the Sand Feb-  
ruary 12, page 23

## Fun in the sun



Isabelle Cook, Kayley Field and Simone Cook enjoy the emergence of the sun at the Kaupokonui Beach Family Day held on January 15. More holiday pictures centre pages.

## Three accidents in an hour

A man was taken to Taranaki Base Hospital by ambulance following an accident on the bridge south of the Opunake

township on Sunday January 22 at around 3pm in the afternoon.

The man was a passenger in a utility travelling south which hit the bridge just before the 100km sign.

A witness to the accident, who was in a car following the vehicle, said it was raining heavily at the time and the

vehicle which wasn't travelling fast, seemed to skid into the bridge. The vehicle, after hitting the concrete barrier on the left, hit the kerb on the opposite side of the bridge before coming to a stop.

Another witness who was travelling north had just come over the brow of the hill in the opposite direction

and also saw the collision. His wife was a trauma nurse helped out as the injured man was attended to.

The couple from Canada later

remarked that it was their third visit to New Zealand and the third accident they'd come across this trip.



The bridge which was extensively damaged.

**4 FOUR SQUARE 45**

**Open til  
9pm  
7 days**

"Big enough to be competitive,  
small enough to care."



77 Tasman St, Opunake • Ph: (06) 761-8668

**NEW COASTAL  
MACHINERY SALES  
REPRESENTATIVE**



**PETER  
LAURENCE**  
**PHONE**  
**027 2477677**  
**OR**  
**06 7575582**

FOR ALL YOUR  
MACHINERY ENQUIRIES

**NORWOOD** 146 GILL ST,  
NEW PLYMOUTH  
**FARM MACHINERY CENTRE** PH (06) 757 5582



## OPUNAKE & COASTAL NEWS

**Registered office:** 23 Napier Street, Opunake  
PO Box 74, Opunake  
**Telephone and Fax:** (06) 761-7016 a/h ph: (06) 761-8206  
**e-mail:** general@opunakecoastalnews.co.nz  
**website:** www.opunakecoastalnews.co.nz  
**Editor/Advertising:** Bernice M'Kellar  
**Production/Advertising/Office:** Carol Marshall  
**Journalists:** Rolland M'Kellar  
Kathryn Stanley

**Delivery:** Thursday, fortnightly

Published by Bernice M'Kellar. Registered as a newspaper.  
Members of the Community Newspapers Association of New Zealand.



The Opunake and Coastal News is distributed free to every home and business within the rural area bounded in the north by the New Plymouth city border, extending east to Egmont Village, and around to the edge of Stratford, south to the Hawera city border and inland to Kaponga and through Eltham.

*Are you living your best possible life?*  
Holistic Counselling & Healing  
Freeing you from that "stuck place"

**Meegan Care** | 06 752 4826  
Dip. Psychosynthesis Counselling  
www.meegancare.co.nz



### On this week in history

On February 29, 2004 film maker Peter Jackson's film "The Lord of the Rings: The Return of the King" won 11 Hollywood Academy Awards - which equalled the Record. These included Best Picture and Best Director..



### MEETINGS:

Sundays at 38 Tayler Street,  
Eltham at 10.30am.

Phone 06 764 7358  
for other Bible Studies.

### Eltham Message Church

Pastor Richard Oliver

We are an independent Bible Believing Church  
All are most welcome  
www.messgechurch.com

## LETTERS

### Hospice Memorial Tree

Through you I'd like to take this opportunity to thank Opunake and surrounding districts for their generous support. Both in sitting with the tree and donations made to this worthy cause, while remembering a loved family member or friend who could not be with us for Christmas. Your efforts were greatly appreciated.

*Sue Saxton  
Co-ordinator  
Opunake*

## F a r e w e l l

On February 27, 2001 Selwyn Toogood died, aged 84. The television and radio personality is remembered for 'It's in the Bag', 'Beauty and the Beast' and the many plays he acted in.

## (Bible Believers Corner) Almost invisible

I have been writing a book. The first few chapters look at the Universe, the world and then the microscopic. In each there are traces of either God or chance. Life is either a random chance or a brilliantly designed piece of molecular engineering. As the book develops it adds the chances of the universe just happening to create the correct settings to allow atoms, molecules, solar systems and galaxies to form, to the chances of a planet having all the right ingredients for life's survival. Then to that incredibly small chance there has to be added the chance of a bunch of amino acids just happening to come together to form life

## Three accidents in an hour

*Continued from page 1*

The man was later discharged from hospital. The female driver of the vehicle was not injured.



The vehicle which was extensively damaged.

Opunake police constable Nigel Dey who attended the accident said three accidents happened in the space of an hour - one in Mokoia and a third in Stratford which he put down

to the heavy downpour.

Commenting on the accident just out of Opunake he warned that the corner was quite dangerous, especially in wet weather.

### Lament to the Lord

They've brought you up to date, Lord, down at St Cecilia's

They've pensioned off the organ and they're praising with guitars,

They've done it for the young ones; we want to draw them in,

But I do wish they could worship without making such a din,

For I'm growing rather deaf, Lord, and when there's all that noise,

It gets so very hard, Lord, to hear your loving voice.

They've written brand new hymns, Lord, with tunes I do not know,

So I hardly ever sing now, though I did love singing so.

They're very go-ahead, Lord, they're doing 'Series Three',

But the words are not so beautiful as the others used to be.

They've modernised the Bible and the Lord's Prayer  
and the Creed,

When the old ones were so perfect that they filled my every need.

My mind's not quite so agile as it was some years ago

And I miss the age-old beauty of the words I used to know.

It's very clear to me, Lord, I've overstayed my time;

I don't take change so kingly as I did when in my prime.

But it can't be very long now before I'm called above,

And I know I'll find you there, Lord, and glory in your love.

So till then I'll stick it out here, though it's not the same for me,

But while the others call you *You, Lord, do you mind if I say Thee?*

*Mavis Clark,*

Forwarded to the Opunake & Coastal News by Sonya Xerri, Australia

*Richard Oliver  
Pastor Eltham Message  
Church  
www.messagechurch.com*

## Doug Fowell Building Contractors

74 Kauae St , Manaia


### ON THE FARM

- Effluent sumps & Drive in sand traps
- Feed pads, bunkers and silage pits
- Load out ramps
- Pole buildings
- Cowsheds
- Insurance work
- Complete farm building maintenance & repair
- All work, Dairy Company, TRC & Dairy Code of Practice compliant.
- All our experience with farm development construction is yours for the asking.

### AT THE HOUSE

- Alterations & additions
- Decks
- Renovations
- Driveways, fences, landscaping
- New roofs
- Aluminium window replacement
- Registered Master Builder
- CONTACT DOUG & THE TEAM TO DISCUSS YOUR BUILDING NEEDS WITH A FREE NO OBLIGATION CONSULTATION

**Mob 0274 848 438**  
**Ph/ Fax (06) 274 8031**  
**Free phone 0800 84 84 38**  
**Email;**  
[dougfowellbuidingcontractors@xtra.co.nz](mailto:dougfowellbuidingcontractors@xtra.co.nz)





# Update on coastal care health facility



Proposed site of proposed health facility - the northern side of Opunake Cottage Rest Home.

The Coastal Care vision to ensure long term primary care for the Coastal Taranaki area, and to incorporate other services that enhance the well-being of the community by building a centre in Opunake which will host health and social services for the entire district, is another step closer with the Coastal Taranaki Health Trust launching their fundraising campaign.

February 28<sup>th</sup> at Sandfords Event Centre is the date and venue for the Charity Fundraising Auction Evening where well known satirical cartoonist Tom Scott will be a guest speaker and performer. Tom's humorous political observations are hilarious and he will also be compiling some original sketches on the night to be auctioned off. An additional attraction at the official launch will be the rugby's provincial challenge trophy, the Ranfurly Shield. Those attending are welcome to have their photograph taken while holding it! Tickets include a light evening meal, refreshments

and entertainment. Some great prizes will be up for auction. Tables will be set to seat eight, so gather up a group of friends and family and help start the ball rolling for our new Coastal Care building. .

Tickets at \$50.00 per person, are available from RD 1 Pungarehu, Rahotu Stores, Pastimes, Opunake Medical Centre, Elite Farm Services, Hairazor, Karams, Agrimech and Corkill Systems.

The dream of a one stop, multi-purpose health and social wellbeing facility is another step closer with the positive support from a number of allied healthcare providers and government agencies. There is ongoing dialogue with the present pharmacist to re-house in the facility, as well as Public Health nursing, District Health nursing, Alcohol and Drug counselling, Community Probation Service, Paediatrics, Vision & Hearing, Arthritis support, Diabetes support, Quit smoking, Stroke group, Psychology, Social Workers, Whanau

Ora, Physiotherapy, Podiatry, Nutrition advice, Mental health, Plunket, WINZ, periodic mobile dental services including preschool and elderly.

The initial costs for the new Coastal Care building are:

Building costs for a floor area of around 480 sq. m @ \$2000/sq mt. \$960,000

Services, site works/parking, furniture and fit out \$173,000

Fees, architect, engineer, surveyor and local authority \$137,200

Additional start-up costs (legal; business consultants, other) \$64,800

Starting cash flow \$65,000

\$1,400,000

Timelines set to date are dependent on funding, but it is envisaged the working plans will be finalised in April, with work beginning September and the new Coastal Care facility completed in January 2013.

A copy of the 'Coastal Care' proposal document can be viewed at Opunake LibraryPlus. Information flyers are also available there. More information is available is on the website [www.coastalcare.co.nz](http://www.coastalcare.co.nz) or by contacting Chairperson Dan Holmes 06

757 5448, emailing [info@coastalcare.co.nz](mailto:info@coastalcare.co.nz) or going to the Trust Facebook page <https://www.facebook.com/pages/Coastal->

## DIGGER PRICE CONTRACTING LTD

For all your hay, silage and cultivation needs

### HAY & SILAGE: CULTIVATION:

- Mowing
- Raking
- Round Bales
- Tube Wrapper
- Single Wrapper
- Tandem Discing
- Power Harrow
- Stone Rower
- Rock Picker
- Chisel Plough
- Roller Drilling
- Levelling

We will do your hay bales from \$14.

20,000ltr Effluent tank, pond cleaning

Surf Highway 45 Okato. Will travel to New Plymouth - Hawera  
Jonathan Price 0272414591 or after hours (06) 7528103  
Hayden Miles 0278593522

Reeves Middleton Young  
Lawyers

RMY

Great People, Great Service, Great Results

For all your legal requirements.

PHONE +64 6 769 8080

FREE PHONE 0800 733 837

CLIENT PARKING

136-138 Powderham Street, New Plymouth, Email [rmy@rmy.co.nz](mailto:rmy@rmy.co.nz) Website [www.rmy.co.nz](http://www.rmy.co.nz)

## NEW YEAR LAPTOP SPECIAL



\$790



Keeping Taranaki online since 1992

- Same day service • Computer repairs
- Virus removal • Printer sales
- Computer sales • Laptop sales

- Ph: Geoff or Ross: 027 481 4638 or 06 278 5229
- [geoffsharpcomputing@extra.co.nz](mailto:geoffsharpcomputing@extra.co.nz)
- 152 South Road, Hawera

4247256AB

THE

NAKI

BUS

# South Taranaki Timetable

MONDAY - FRIDAY

Hawera – Eltham – Stratford – Inglewood – N/P – Airport

6.45am 7.00am 7.10am 7.30am 8.00am 8.20am\*

6.30pm 6.45pm 6.55pm 7.15pm 7.35pm 8.00pm\*\*

THURSDAY – MONDAY

10.00am 10.15am 10.25am 10.45am 11.15am 11.35am\*

\*Connects to Auckland

MONDAY – FRIDAY

N/P – Airport – Inglewood – Stratford – Eltham – Hawera

8.00am 8.20am 8.45am 9.05am 9.15am 9.30am

7.35pm 8.00pm 8.30pm 8.50pm 9.05pm 9.15pm\*\*

THURSDAY – MONDAY

Airport – N/P – Inglewood – Stratford – Eltham – Hawera

2.05pm 2.30pm 2.55pm 3.15pm 3.25pm 3.40pm\*\*

\*\*Connects from Auckland

Book at your local I-site, Travel Agent, N/P Bus Centre

Or PH 0508 GO LOCAL

## NURSERYRHYME LTD - BABY BOUTIQUE

### SUMMER SALE

20%-50% off

158 High Street Hawera Ph 062788035 Hrs Mon-Frid 9-5 Sat 9.45-12.15





**For ALL Your Electrical Needs!!**

**Air Conditioning**

**Generators**

**Data Logging  
AND MORE!!**

**Call Ann  
For a Free Quote**

191 Broadway, Stratford

**Ph: 06 765 5290**

**Fax: 06 765 5832**

## RENTAL VEHICLES



- **CHARTER BUSES**
- **VANS**
- **TOUR BUSES**

## ALUMINIUM SCAFFOLDING FOR HIRE

\$35 per day, \$50 weekend.

More than 6 days \$30 per day.

## WATERBLASTER FOR HIRE

Petrol 3000 psi 15L/minC

**Cost: Half day \$90, Full day \$120, Weekend \$130. Friday after 3pm return Monday 9am.**

Bond for waterblaster and scaffolding \$50.

For more information contact Tracey or Christine at

## PICKERING MOTORS

11 TENNYSON ST OPUNAKE PH (06) 761-8363  
0800 22 11 20 Email: pickering.motors@xtra.co.nz

## COUNCILLOR'S COMMENT



*Ian Armstrong*

### Councillor's Comment

Firstly a push for an event the STDC Events team are bringing to the Opunake beach on Sunday 12 February. Sounds on the Sand will be featuring the band 'Hard Candy'. This group play country rock and blues with items of boogie and swing. They start at 1.00pm so if the weather is as good as last year it should be a great day on the beach. Also, on February 17 starting at 4.00pm a fun bike ride will occur starting at 4.00pm in the Sandfords Event Centre car park. Initially the police and Roadsafes Taranaki will be involved with a bit of bike safety and maybe some fun activities, then a bike ride will occur through some of the streets of Opunake finishing at the beach with a free BBQ and spot prizes. It is an event for young and old, hardly strenuous but hopefully a lot of fun. Mayor Ross will be riding (with his Mayoral Chain?), the Opunake Lions will be marshalling, cook-

ing the BBQ and generally assisting and the Opunake Fire Brigade and police will (unless there is a callout) be escorting.

For the first article for 2012 I must acknowledge that the majority below I have copied from information Gerard Langford from the District Council has given me. Having said that, I think it is worth passing on and bearing in mind.

Additional to the annual planning process that council must undertake, every three years it is required by law to revise and rewrite its Ten Year Plan. This requirement makes council reconsider what it is planning to do over the next 10 years, what its priorities are, the services it will deliver and their standard. This revision will be considered by the councillors in the earlier part of 2012 and will be discussed in community meetings to get feedback.

When talking about the Long Term Plan it is worth remembering the fact that Council planning is always a balancing act – between investing in the facilities, infrastructure and services people need/demand while trying to keep rates at an affordable level.

Some context - South Taranaki has a population of approx 26,484, (around 14,800 rateable properties) made up of 7 small towns spread over

geographically a large area (362,000 hectares).

Throughout the district the Council provides:

7 libraries

9 Halls, (plus supports a significant number of rural halls), supports the Sandfords Event Centre and has one sports, events and function centre (TSB Hub)

10 cemeteries

7 campgrounds

7 swimming pools plus financial support to Opunake Community Baths

1 I-SITE information centre in Hawera

A rural fire depot and team at Waverley

7 transfer stations

8 wastewater plants

13 water schemes – which includes 642 km of pipes, 12 water treatment facilities and 11 reservoirs

77 pensioner housing units

31 playgrounds along with 700 ha of parks/reserves all of which we maintain

1,612 km of roads which we construct and maintain (81% sealed), 223 bridges, 2,400 streetlights and over 160km footpaths

Only 53% of Council's revenue came from rates last year. The other 47% came from Council investments (21%), government grants and subsidies (13%), user charges (7%) and other contributions (6%).

The activity with the highest

expenditure is roading. Last year roading accounted for 28% of total operating expenditure. The next highest was water supplies (16%) and waste services (15%). 59% of Council's total operating expenditure was on these 3 core services.

Last year as a result of recycling and composting council diverted 28% of our waste from the landfill. Not only is this good for the environment, but it is great for our pockets too as it means we don't have to pay transportation costs, landfill fees or emissions and methane tax!

On average property damaged as a result of vandalism/graffiti costs about \$61,000 each year.

A lot of the above we have to service and pay for however there are also activities that the council undertakes that are discretionary or different levels of service could be offered. If you want to have ideas considered to be included in the 10 year plan prior to them going out for public consultation or just see what council is up to, then join the council on Facebook, go to [www.southtaranaki.com](http://www.southtaranaki.com) or use one of the tried and proven methods such as going through LibraryPlus centres.

*Ian Armstrong*

## Ride share

Liz Beck from the New Plymouth District Council has taken up ride sharing and has shared with us some of the benefits involved.

Being the Council's Let's

Go Travel Planner Liz is passionate about 'walking the talk,' but living 27km out of town makes the usual walk, ride or bus choices tricky to commit to on a regular basis. That's where ridesharing comes in. "When I first moved into the area nearly a year ago I put a notice and posters up in my local shops asking if anyone was interested in ridesharing and I have managed to rideshare most weeks since then," says Liz.

"The rideshare group that I share with have a loose arrangement where we send

round emails at the end of the week to arrange rideshares for the following week as well as who's going to drive each trip."

Liz estimates she saves around \$85 a fortnight in petrol and she likes the way it has helped her to meet people in her community. She also acknowledges it makes her work smart as she can't always stay another five minutes to finish a task or answer an email. The only drawback to ridesharing that Liz has discovered is that she can't have impromptu drinks

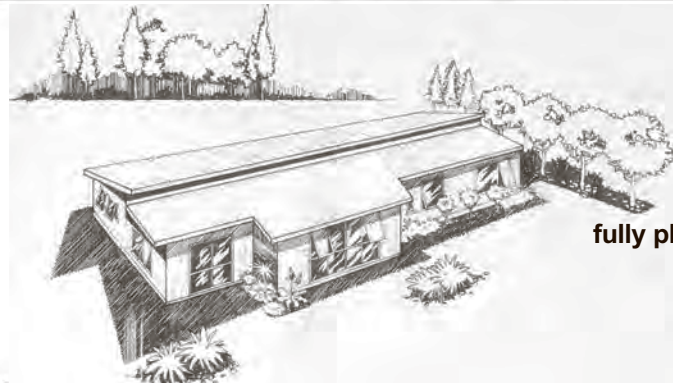
after work!

"What puts most people off ridesharing is the 'what ifs', but many workplaces have a 'guaranteed ride home' set up where there is a pool car to use in an emergency, but in 11 months of ridesharing I've never had to call on a system like that."

"No matter if you live rurally like me, or just five kilometres away by taking someone else to work you are reducing the number of cars on the road, saving money and maybe even building a great friendship!"

## BRANDERSON HOMES LTD

Pre Built Homes



**The Lancaster (Mono Series)**  
**Size: 126 SQ M (4 Bedroom)**  
**Delivered to a flat site \$161,161 incl GST includes foundation, fully plastered and all kitchen @ bathroom fittings.**



37 Hautapu Rd  
Cambridge  
Email: branderson.homes@xtra.co.nz

0800 PR BILT (0800 77 2458)  
Ph 07 827 3901

Website: [www.brandersonhomes.co.nz](http://www.brandersonhomes.co.nz)

Please send us an information pack  
about your Transportable Pre-Built Homes

Name .....  
Address .....  
Phone ..... Style/size .....

Mail to: Branderson Pre-Built Homes  
PO Box 434, Cambridge



**2475 Surf Highway 45 OKATO**  
PH/FAX 06 752 4044 MOBILE 0274 448106  
Email: [barronz@xtra.co.nz](mailto:barronz@xtra.co.nz)

- Houses
- Alternations
- Decks
- Bathrooms
- Kitchens
- Roofing
- Fences
- Concrete
- Cowsheds
- Farm Buildings.



# Eulogy: Ann Stockman (Antje)

Beloved local identity, teacher, mother, grandmother and friend of many, Ann Stockman died on November the 28<sup>th</sup>, 2011.

Ann, a first generation New Zealander to Dutch parents was born in Tolaga Bay on the 13<sup>th</sup> of April, 1928. She was the youngest of five children to parents in their forties, her father being a painter and decorator and mother a psychiatric nurse before leaving Holland. Unfortunately the family became destitute when all their savings went in an investment during the Depression.

This event prompted a move to Opotiki where Ann attended the local high school, then went to work before going onto Ardmore Teachers Training College. She returned to Opotiki to teach starting in the infant department. However, this was not to last as she moved into the Secondary area where her natural intelligence, flexible attitude and belief 'you can learn anything out of books' saw her teaching Art, English, Physical Education, Music and Typing.

Ann had heard her mother explaining to a neighbour



Ann as a young woman.

that she wasn't expected to lead a long life as she had suffered poor health as a child. This led Ann to believe that she wouldn't marry - so she concentrated on her job. Then she met and fell in love with Ken Stockman, a farmer from Reporoa, married him in Opotiki and soon moved to Pungarehu.

Ken (junior) was born in 1958 and Julia in 1959. Ann started teaching at Oponake High School in 1960 as times were tough and she had the support of her mother to look after her

young children. Beverly was born in 1965.

Again Ann returned to teaching at Oponake, where she stayed for thirty years, as Head of the Art Department and then later as Senior Mistress. She was always committed to the extra-curricular activities of the College, the activities that require going the extra mile so that she was known for her 'busyness'. Ann was held in high regard by both the staff and students at Oponake.

In 1988 Ann retired from teaching, having battled cancer twice. She was noted for her incredibly positive ideas about contributing to her own healing. Upon her retirement she joked that she felt "sufficiently educated

to leave school and try a new direction... painting, potting, weaving, writing ... to enjoy time with her grandchildren and even go surfing." To add to this list must be added stalwart 'supporter of the Oponake and Coastal News'. Ann, always a listening ear, reliably transported the prepared pages to the printer in Stratford each edition over many years.

Ann was immensely proud of her family, sharing their achievements with pride. She nursed her husband Ken with love and devotion through his battle with cancer. The sudden death of Ken (junior) just a few months later rocked Ann to the core. It is a tribute to her resilience and the support of her family that she picked herself up and got on with living.

In Ann's 'so called retirement years' in Stratford, she loved gardening, sparkling conversations with friends and involvement with community events. Her wit never diminished, immortalised by the comment upon leaving hospital after the infamous run in with the cat that "getting old is not for sissies".

Ann was courageous, creative, feisty, funny, loving, generous and kind. She was a woman of integrity with a clear sense of what was right and wrong.

Ann, you will be missed.

*Everlasting Memories*  
- MONUMENTALISTS -  
268 Devon St East, New Plymouth Phone & Fax : (06) 759 9975  
heather@everlasting.co.nz  
www.everlasting.co.nz  
600 x 450 x 75 headstone on 750 x 300 x 100 base.  
\$1363 Includes lettering and GST

**Anderson's**  
MONUMENTALISTS  
Cnr Collins & High Sts, Hawera Phone: (06) 278-5518  
www.nzheadstones.co.nz  
daryl@nzheadstones.co.nz  
sharron@nzheadstones.co.nz

**Clegg's Funeral Services & Monumentalists**  
'Serving all districts'

Mike Clegg Susan Clegg Andrew Blanche  
MOB. MOB. MOB.  
027 496 9090 027 441 7039 027 496 9045

Office - 24 hrs (06) 278 8088

## On this week in history

On February 25, 1885 Mary Leavitt, an American temperance and women's rights activist, organised a meeting in Auckland, which led to the Women's Christian Temperance Union. New Zealand's Kate Sheppard was a founding member, who campaigned successfully for women's right to vote in this nation.



Ann was a very talented cartoonist and her cartoons featured in many Oponake High School magazines. They displayed much wit and indicated she was a keen observer of human nature. The above was printed on the funeral programme.

## BROPHY BUILDERS

For new homes, roofing, alterations, kitchens, decks and all farm buildings.

For all your building requirements phone Phil

6190 South Road, RD 35, Pungarehu

027 236 7129 or (06) 763-8777 a/h

**CARE TO  
RIDE SHARE?**

TRAVEL AS A GROUP.  
HAVE FUN AND SAVE MONEY.

WWW.LETSGO.GREENRIDE.COM



Te Kaunihera-a-Rohe o Ngāmotu  
NEW PLYMOUTH  
DISTRICT COUNCIL  
newplymouthnz.com





## Leatherby Builders

- New Homes/Renovations
- Decks/Fences
- Concrete Work
- Bathrooms/Kitchens
- Alterations
- Free quotes

Call Corey  
**027 778 0869**  
or Emma  
**027 487 1403**

Email: weta.emma@gmail.com  
57b Anglers Ave, Warea

# Coastal Cops Eltham



Constable Andrew Russ

The New Year has come and gone and most of us are back at work trying to get back in to the swing of things. If you are like Police officers, and don't get lots of time off over this period, then all the rain we have been having hasn't been such a bad thing as you wouldn't have been able to enjoy the sun anyway! I know the farmers will be happy with this summer rain, although I hear a few complaining that the have had enough now.

I suppose with this latest bit of sunshine the contractors will flat out doing hay which leads to the inevitable delays from the slow moving tractors on our roads. But please be patient with the tractors and don't think if you have sat behind one for 30seconds that you need to get out and make a risky passing manoeuvre. The contractors do their best to move over and let traffic past when they can. Just remember that these guys are working and trying to get somewhere as quickly as possible too.

On the subject of traffic NZ had a record low road toll death in 2011 so maybe the messages of "Don't drink & drive" and "slow down" amongst the other campaigns are getting through to road users. Well done to everyone on the road and let's try and get it lower this year. Every Police officer will tell you

that the worst part of his job doing the 'death knock' - telling a family member their loved one isn't coming home so let's be safe out there.

Still on the subject of roads, it's that time of year where the roading contractors rip up and replace lots of our roads around the area causing delays in traffic. Please adhere to the 30km/hr and other speed restrictions or you may find yourself lighter in the pocket. This the roading guys place of work and they need to feel safe at their work. Also the higher speeds can further damage new roads and, in turn, damage other vehicles so slow down as we will be monitoring these areas if we get complaints from roading contractors (and believe me they do call us!)

Well I have managed to fill the report with mainly road issues, but also now that the

sun has arrived everyone needs to keep windows and doors locked on houses and cars. The thieves are not worried about the sunshine (although if you see anyone wearing a balaclava in this heat be suspicious) and they love it when people make life easy on them by leaving things unlocked - so lock it or lose it.

Also firearms holders need to be extra vigilant in light of a number of recent firearms thefts in the area. Be sure all are locked away and secure as per your responsibilities under the Arms Act. Anyway the Zimbabweans are almost here, followed by the South Africans in February so hopefully the Black Caps can continue on their winning ways after smashing those Aussies before Christmas. Enjoy

Constable Andrew Russ

## D P Plumbing

Craftsman Plumber  
Living locally in Okato

15 years experience

Competitive quotes, prompt service

Phone Duane on  
(06) 752-4897 / 021 023 05 021



Exceptional service when you need it most

Phone 759 0912 at anytime

- Member FDANZ gives you added assurance
- Modern chapel with adjacent catering lounge
- Plenty of off-street parking
- Prearranged funeral plans at no charge
- Environmentally friendly options

Exceptional service...  
when you need it most

At Vospers, we show we care by attending to every little detail to make the service everything you'd like it to be. And we don't stop caring when the funeral is over, because at Vospers, nothing is too much trouble.

Vospers funeral directors Andrew King, Kirsty Mehrtens, Bruce Hanrahan (Manager), Dart MacLachlan & Paula Shaw.



257 Devon St East, New Plymouth | www.vospers.co.nz

## New op shop in Opunake

A shop focussing on pre-loved designer labels has opened in Opunake - it is called 'Joyleen's Closet'.

Owner Joyleen Sandford says she's patronised op shops for years and felt there was an opening in Opunake for fashionable and stylish designer labelled second hand clothes.

"A good percentage" of the proceeds from the shop will be donated to Opunake St John.

She travels from all over the central North Island for clothes looking for designer labels.

Joyleen's daughter Grace will be helping out in the shop - working in the afternoons while Joyleen does relief milking.

Joyleen's Closet will also be selling various nik naks in the shop and Joyleen said she is happy to cater for people who want something specific.

One unusual request was from a woman "who collects



Joyleen Sandford in Joyleen's Closet.

elephants" - presumably not the actual animals - and

elephants."

"I've got a growing list of what customers want," comments Joyleen.

She's also got a retro clothes rack for hire, which she is continually adding to. It includes men's tails and also a

dress suit.

Joyleen's Closet is in Napier Street. Joyleen said she would like to thank all those who have helped in her new venture, particularly Grant Cavaney and also her daughter Grace.



WE ARE YOUR PERSONAL, FRIENDLY FARMING  
& BUSINESS ACCOUNTING SPECIALISTS

**0800 ACCOUNTANT**  
**2 2 2 6 8 6**

OPUNAKE OFFICE is OPEN every WED 9.30am-3pm

Ph our Hawera office on (06) 278-4169 • 26 Wellington St, Hawera  
or E-mail: services@hughson.co.nz www.hughson.co.nz



Mark G Hughson,  
B.B.S., C.A., Dip B.S



Dorothea Henry

## YOUR CHARTERED ACCOUNTANT

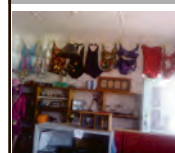
- is a member of the New Zealand Institute of Chartered Accountants
- studied for 7 years to achieve his professional qualification
- is required to undertake on going professional development
- is bound by a code of ethics and professional standards
- has a professional qualification from New Zealand that is internationally recognised

Look for the word  
**"Chartered"**  
your assurance of quality

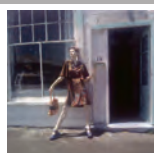


## JOYLEEN'S CLOSET

COME IN AND I'LL 'GOK' YOU OUT



Fashionable labelled clothing.  
Catering to all sizes.  
For men, women & children.  
Retro rack available  
for hire.



19 Napier Street,  
Opunake

Some donations are going to the  
Opunake St John's Ambulance  
Service. Any donations  
of clothing etc appreciated.

OPEN DAILY  
FROM 9AM



# New Year's resolutions



**Bryan Kyle**

Many people would have found that their New Year's resolutions have already 'gone by the board'. "It's easy to just say that when has happened that the person's motivation levels were not high enough – which is substantially correct – but what people don't understand is firstly, what causes this lack of motivation? and secondly, how to change it", says clinical practitioner Bryan Kyle of Eltham.

"Ordinarily, when there are low levels of motivation to change something, but the person still wants to change, it's because the part of them that doesn't want to change is much stronger and with more energy than the part of them that does want to change – so therefore the stronger part will dominate and get its way", he says.

Mr Kyle says that there are numerous ways to change these levels of motivation. "Firstly, it may be important to address any real and deep causes of the problem in the first place – as for many people, until deep-lying causes are addressed and sorted out, no form of lasting change can usually occur – the problem will usually come back in some form or another", he says.

"Secondly, the various parts of a person's personality – the conflicting parts – can be

worked with in the clinical situation, and the conflict between these different parts 'ironed out' so that the person can increase their motivation level to change and thus improve their chances of successfully making long-term changes".

Other techniques and skills can also be used to increase one's motivation levels as well, he asserts – "it's a matter of finding the right way for each individual client, as everyone is different, and people respond in different and various ways."

Giving up smoking and weight loss are the two big issues which people tend to come up with at this time of the year. He explains, "part of the problem may well be that people are conflicted about what they want to do – a part of them wants to smoke and a part of them wants to give up – a part of them drives them to eat and another part wants them to stop doing that and to lose weight instead. This can be a real barrier for stopping smoking and losing weight," he says. Inner conflicts can be resolved fairly easily using hypnosis, according to Bryan.

"And with weight loss, reducing one's weight is generally the easy bit", says Mr Kyle. "It's keeping it off that is the difficult bit,

as most people who lose weight, put it all back on within 12 months and then gain some extra!", he says. "Maintaining one's ideal weight is a life-long issue – it's better to sort out the issues which prevent this, rather than battling oneself relentlessly," he says.

"I now, in addition to the sorting out of deeper causes, also give clients the skills which they can use by themselves for the rest of their lives, which is a real bonus, as they can then go on and address any other issue they wish to", he says. "For weight loss, it doesn't really matter what technique is used – dieting, exercising more, or even hypnosis – they are all usually successful if the client is motivated enough, says Mr Kyle. Mr Kyle has himself been trialing his own breakthrough 5 minute hypnosis sessions for weight loss – "I started on the 1<sup>st</sup> of January, and had lost 9 pounds, say 4 kilograms, by the 18<sup>th</sup> of January – too much too fast", he says, "but it shows how the power of the mind, when concentrated, can achieve good results".

His next trial involves using 5 minute sessions just a few times a week, for maintaining one's ideal weight, as everyone has 5 minutes to spare. "And one can make self-hypnosis fun and enjoyable too", he says. "One can look forward to these sessions and enjoy them, as they really can be fun".

He goes on to explain that "It's quicker with hypnosis because you're dealing with the unconscious mind, where all people's drives, needs, memories and emotions are. These are the things that need to be changed for a person to be able to make significant changes in their life. Psychotherapy and counseling by contrast occur on a conscious level where things like denial, resistance, manipulation, avoidance, justification and minimizing

can occur. Hypnosis however deals with the unconscious mind at a deep level, and so improves the chances of faster and more significant change, targeting directly the issues that need to be sorted out and changed."

"Although hypnotic interventions are quicker than psychotherapy or counseling, I make sure I do a very thorough diagnosis with the client – this can sometimes take the best part of two sessions in its own right – firstly just the normal interview and questioning scenario, and then some diagnosis with the client in hypnosis when required – and this is very thorough and usually gets to the nub of the matter", Mr Kyle says. "And resolving the issue or issues can take several different pathways as well, and there can sometimes be some trial and error and that happens when we're dealing with people as they are a complex mixture of genetics and life experience – no two people are anywhere near the same – we're all different", he adds. Hypnosis is also particularly good for improving self-confidence and self-esteem according to Mr Kyle, "and we all need that sort of boost from time to time", he says. "We get 'knocked down' in life, and we all know that we're better off if we get straight back up and keep going, but sometimes that's easier said than done", Mr Kyle states. "That's where hypnotic interventions can be quite useful, quite quick and very helpful", he says. "And then I also give people the skills to help deal with this for the rest of their life too."



## Eltham Barbers

Men's & Ladies  
No appointment needed


Monday to Friday  
9.30am until 5pm

38 Bridge Street, Eltham 027 282 6322


### Thinking about building your own?

Why not take advantage of our  
**FREE building Project Requirements Interview**  
and find out the feasibility and what you need to get started?  
Talk to an architect without obligation

128 Vivian St, New Plymouth  
**Ph 06 759 7430**  
[www.saundersarchitects.co.nz](http://www.saundersarchitects.co.nz)



**saunders**  
**ARCHITECTS**



### 1997 TOYOTA LANDCRUISER

4.2, turbo diesel, tow bar.

**\$26,000**

## DON OAKES MOTORS

Broadway, Stratford  
Phone & after hours (06) 765-4383  
or go to [www.donoakes.autotrader.co.nz](http://www.donoakes.autotrader.co.nz)

## BRYAN KYLE

CLINICAL PRACTITIONER

**"HELPING PEOPLE  
MAKE THE CHANGES  
THEY WANT TO MAKE"**

Phone 06 764 8121  
Mobiles 027-2635844, 021- 02731829, 022-0810775


## ELECTRICAL WORK 24 HR BREAKDOWN SERVICE 7 DAYS

### PLANNING A NEW COWSHED?

Phone us for for a quote.

**OKATO 752 4084**  
**KAPONGA 764 6084**  
**MANAIA 274 8084**  
**OPUNAKE 761 8084**

## SINCLAIR ELECTRICAL & REFRIGERATION





# INGRAMS

Contracting LTD

**PERMANENT  
HIRE  
BINS**



LOCALLY OWNED AND OPERATED

• Ph (06) 278-4786 • 027 4458 701 • A/Hrs (06) 278-7063

Collins Street • Hawera

L  
A  
W  
Y  
E  
R  
S

## Thomson O'Neil & Co.

Our Opunake Office is attended by:

**Robert England** on **Wednesday** and **Fridays**, for buying and selling Houses, Farms and Businesses; Trusts; Wills and Estates.

**Neal Harding** on **Thursday**, for Residential Sales and Purchases; Family, District, and Criminal Court matters; Civil and Business matters.

FOR ALL YOUR LEGAL REQUIREMENTS

**30 Tasman Street,  
Opunake  
Ph: 761-8823**

## A time to reflect and to look

The holiday season was a time to get together with family and friends, and enjoy the good things about the great Kiwi summer. It's was also a time to take stock, and a time to look to the year ahead.

As we look back over the past year, I am proud of the way National has guided the country through some challenging times.

The Canterbury earthquake in February claimed many lives, and left so many grieving. It created widespread devastation.

National stepped up, supporting people through the immediate catastrophe, and committing to the on-going rebuild of Canterbury. We've finished the red zone classification process and we're using the Canterbury Earthquake Recovery Authority to make land available for residential subdivision development.

In October the container ship Rena run aground on the Bay of Plenty coastline, spilling oil and containers into the sea. The response to the disaster was first class, with specialist teams on the ground within 24 hours. The Government put every available resource into the clean-up and recovery efforts, and thousands of volunteers cleaned up beaches, protected wildlife, and helped in many other ways.

The global financial environment remains stormy but National is making sure our books are in order. We are focused on less debt, more jobs, and strong economic management. 63,000 new jobs have been created in the past two years, and we expect to see another 150,000 jobs created between now and 2016.

Our National-led Govern-

ment is a fiscally responsible one. Last year we introduced a zero budget, putting a lid on operational spending. We intend to halve the Budget deficit this year and get back in surplus by 2014/15.

We have work underway on our mixed ownership model to offer Kiwi Mums and Dads shares in the four energy state-owned companies while the Government maintains a 51 per cent controlling stake.

This will free up money so we can invest in new assets, such as schools and hospitals, without increasing our debt to overseas lenders. Mighty River Power will be the first company prepared for an initial public offering to investors, expected to be in the third quarter of this year.

We've begun work on welfare reform, and will continue with our programme to build a system that focuses on



**Jonathan Young,  
New Plymouth MP**

what people *can* do. We will provide support, training and opportunities to return to work. And we'll do more to help people into work through childcare, training, workplace support, and access to health and disability support services.

National is continuing to build better public services and focus on the issues that matter to you. We will keep working to secure a brighter future for you and your family.

*Jonathan Young*

## Difficult days ahead



**Andrew Little  
List MP**

As if the rough summer weather wasn't enough of a bad start to the year, now we are hearing of gloomy economic weather ahead.

I think this year will be a tough year for most, although Taranaki may be the exception.

All the indications

coming from other parts of the world are that things are tightening. Europe is only part way through the most serious region-wide economic crisis in decades. The UK is undergoing one of the most severe austerity programmes since the 1970s. What is happening in that neck of the woods will affect worldwide demand for goods, and so will affect New Zealand. It will also affect what happens in China. Many European manufacturers sent production of their goods to China throughout the 2000s and those goods are meant to be going back into a region that is desperate to cut imports. And if China suffers, we all will, and this guarantees we will see a fall off of demand in this crucial market.

In North America there has been some positive news about improvements in the economy. Unfortunately, whatever is happening is not generating too many extra jobs. Unemployment there is still around 9%. Until demand improves, there won't be a dramatic improvement in economic fortunes there.

In South America, even the powerhouse economy of Brazil is now feeling the effects of the worldwide downturn.

One bright prospect in Taranaki, at least for the immediate future, is the deal between Todd Energy and Methanex to allow Methanex to open a second process "train" at Motunui. This will add investment

and jobs to the region at a time a fillip is sorely needed, especially to the local engineering sector.

But it also reminds us that we are still reliant on processing a non-renewable resource and we need to continue to the search for and investment in new sustainable activity.

The challenge for New Zealand this year, in my view, will be to make sure we don't make short-sighted decisions under the pressure of difficult economic conditions. The challenge to lift our national income and improve wages, reduce poverty and stem the growth of inequality is still with us and shouldn't be compromised by bad decisions now.

*Andrew Little  
List MP*

## FARMBIKE SERVICES

(1995 WAREA-OKATO)



**GAVIN SHAW  
OWNER**

For all your farm-bike Servicing and Repairs. I also carry out Servicing and Repairs on late model, American, European and Japanese Road Bikes.

Remember I can source usually same day:-

**TYRES**

**MUSKET MUFFLERS**

**CHAIN & SPROCKETS**

**OILS** (Castrol & Mobil products)

**BATTERIES** (including tractor & truck)

in fact most automotive parts including

**BEARINGS & SEALS**

**PLUGS & FILTERS etc.**

I also offer after market Bolt on, dress up, sound good products for all motorcycles as well as a Quick turn around welding Service (Local).

Most parts and accessories books to view. So phone Gavin on **06 752 8054** or visit Warea Road, WAREA

## T.S.R. (TARANAKI SOUTH RECYCLE)

Licenced Scrap Metal Buyer

Member of the Scrap Metal Association

### WE BUY - UNWANTED CARS

- \$140 for complete car picked up
- \$180 if delivered to the yard.
- Roofing Iron
- Steel

**ANY NON FERROUS SCRAP**, ie copper, brass, lead, s/steel, alloy cans, etc.

We accept, **FREE OF CHARGE**, all whitewear, computers, TV & home appliances.

**CALL ERIC or  
IAN ON  
027 237 8003  
or depo (06)  
764-8303**



2 Pinney Drive, Eltham



**Andrew Little MP had concerns about safety at Pike River Coal Mine.**

## Author's attic to be displayed

The South Taranaki community well remembers the hype surrounding the making of the film 'Predicament' in 2009. Many of Hawera and Eltham's buildings and streets became sets for the durations of the filming and many locals discovered skills

as extras and wranglers. That film represented the last of Ron Morrieson's four novels to make it to the silver screen. Four novels – four films. A pretty impressive result by anyone's standards. Morrieson's literary efforts are certainly something South

Taranaki can be proud of.

The Tawhiti Museum is currently building a structure which will house the original attic from his house – and where he did all his writing – upstairs and a set from 'Predicament' downstairs. The attic has been in storage since

1993 when local builder Robert Surgenor removed it to save it from the demolition squad who were clearing the site for the erection of the KFC building.

Christmas and the busy holiday season will slow progress on this project, but sometime during the first few months of 2012 we should be ready to move displays in and give Ron Morrieson the exposure his work – and engaging lifestyle – deserves.

As part of that display we are assembling short video clips of people who have memories of some contact with Ron – either his music, his writing or his socializing! If you are one of these people, or know of someone who might qualify, please let us know – it's these personal stories that will bring the story alive.



# So brilliantly clever - and diabolical

## So Brilliantly Clever

A book review

*So Brilliantly Clever: Parker, Hulme and the murder that shocked the world – written by Peter Graham, Awa Press, Wellington, 2011.*

This carefully researched book, is written by a man who, as a lawyer, worked (at a later date) with one of the defence lawyers of one of the accused in the shocking matricide murder of the 1950s (June 22, 1954). This case involved two teenage friends in Christchurch (both born in 1938). Determined not to be separated – one was headed to South Africa to stay with a relative – the girls devised a plan to kill Pauline's mother Honarah while on a 'pleasant' outing in Victoria Park, in the hills above Christchurch. It was meant to look like an accident.



Juliet Hulme (left) and Pauline Parker.

The plan was poorly conceived and rather transparent – especially when incriminating diary writings were read (“Why could Mother not die? Dozens of people are dying all the time, so why not Mother?”). The trial revolved to a degree around the question “Were the girls insane or evil?” Both girls were convicted of murder and spent about five years incarcerated.

Both girls, as women, put their crime behind them, and were neither insane nor evil, despite their episode of brutality. Pauline (renamed Hilary Nathan) had a riding school in Britain for a while and Juliet is now Ann Perry the million-selling crime writer, with over 60 books to her credit. Both women are deeply religious. Neither ever returned to NZ.

In 1994 Peter Jackson made

a film ‘Heavenly Creatures’ which awakened interest in the case. To my mind it is the best NZ-made film I have seen. Time magazine described it as the one of the best ten films of the year. It was the film that launched the career of award-winning actress Kate Winslet and the talented Melanie Lynskey, formerly of New Plymouth.

The book has many excellent photographs which enhance it greatly. The photos cover personalities, crime scene, newspaper coverage of the trial, intriguing murals created by one of the pair and family histories.

This book delves deeply into the many undercurrents beyond the actual crime – and examined the two contrasting families of the two girls and the many secrets which emerged at the time of the trial and since. I thoroughly recommend this book.

*Rolland McKellar*



From left, Kianni-Mayy, Thomas-Moore( Ciarra), Brodie Hollis (Highland Warrior), Nico Hill (Michael Jackson), Eva Langton(Susan), Nathaniel Davy (Malcolm Young), and Herne Minhinnick (Angus Young).

## True Colours

Students from St Joseph's Opunake performed their musical True Colours at the new venue Opunake Everybody's theatre on December 16. The show is based around a young performer, Susan (Eva Langton) who has her confidence thoroughly rocked by a tough American Idol audition. But then the spirit of Michael Jackson (Nico Hill) comes to the rescue to show Susan how to 'find herself as a performer'. And so an eclectic, colourful, mish-mash of musical memories and styles follows as Susan goes on her journey of discovery.

Michael Jackson is helped out by his team of Quote Notes and together they set off to find Susan's "True Colours". MJ takes Susan to meet Elvis (Damon Judd-Olliver). The opening scene, Jail House Rock, being a very cute rendition as they rocked around the clock together with D Note (Ethan Adams). Elvis gives Susan the advice to have ambition

and 'rock on'.

This 50's set was followed by a Scottish theme including a great performance by The Piper (Jacob Haden) and Celtic dancers, followed by a battle scene of the Scots vs English with William Wallace (Antony Kidd) leading a party of freedom fighters. E Note requests an autograph, but instead of gifting her his clan tartan (to show what Scotsmen wear beneath their kilts) she learns that freedom and courage are some of her colours.

The period shifts so that MJ and Susan are "Thunderstruck". AC/DC Angus was convincingly portrayed by Herne Minhinnick's brilliant performance and Malcolm Young (Nathaniel Davy) truly rocked a great air guitar and head banging. Hayden Shirtcliffe (F note) and Hamish Davy pulled off the AC/DC signature moves with style.

Cotton-eyed Joe lead us into the world of country with Billy Ray (Callum

Hickey) and Miley Cyrus and her outspoken godmother Dolly Parton (Brooke Heaps). This was hilarious. Krysten Johnson, playing-Miley, was one of the stand-outs delivering a very impressive confident character and vocal performance.

Fireworks, by Katy Perry (Tara Clement), was a gorgeous display of sparkly attired firework dancers (Jakartia Munro-Smith as Madonna) all 'vogued' together with Madonna's security detail.

Dragged out disco divas followed with Misty Luckin and Moorby on their way to rugby practice joining the School staff dancing 'Blame it the boogie' with Susan. Nico Hill was exceptional in this scene, performing the king of pop's signature moves superbly.

Next the merits of Hip Hop. Kianni-Mayy Thomas-Moore) as Ciarra and Hunter Ratahi-Smith as Missy E, are taught to Susan. It is explained that hip

hop is often misunderstood as it embraces beauty art and poetry and a celebration of life.

The main characters then partied to Black-Eyed Peas' 'Good Night', the Quote Notes recounting the lessons that had been learned on the journey. 'Be unique and different, have ambition and rock on, free yourself and do your thing, pave the path you want to walk, and don't forget the Boogie. Express yourself and show your true colours. You are the rainbow.'

The show was a huge credit to everybody involved behind the scenes. Congratulations to Director Raeleen Luckin for another successful production.

*Vanessa Smith*



### SHOE & BOOT SALES

*Also*  
**SHOE, BAG & LEATHER REPAIRS**  
 by **SCARPAS** David Deacon  
**Quality Girls' School Shoes, NZ made \$65**  
 (same price for boys)  
**Girls' School Sandals \$57**  
**Roman Sandals (blue) \$50**

244 Broadway Stratford  
 Ph (06) 765 5591  
 Fax (06) 765 5594

ON MAIN

WELCOMES ANGIE!

To celebrate we have an introductory offer ..

Full Head Colour \*\$60  
 Half Head Foils \*\$65  
 Colour & Foils \*\$70 (All include a dry.)  
 Also Perms only \*\$45

Specials with Angie only and some conditions apply.

46c Main South Rd, Manaia  
 06 274 9090

## Craig ELECTRICAL

OPUNAKE

For all general electrical and wiring work.  
 Domestic and farm maintenance, new houses and cowsheds.

Ph Craig on 027 207 7775

The **GRUNDFOS**

## RANGE OF PUMPS

### FARM RETICULATION



- Washdown Pumps
- Drainage Pumps
- Submersible bore-hole pumps
- Multi-stage pumps, centrifugal pumps
- Domestic pumps

### DOMESTIC WATER PRESSURE SYSTEMS



Water on demand to your home.

GRUNDFOS DEALER SINCE 1980

## COASTAL AGRI SERVICES

Tasman St, Opunake • Ph (06) 761-7079  
 www.coastalagriservices.co.nz  
 24 HOUR SERVICE - 7 DAYS A WEEK



JKL

JOHN  
KELLY  
LIVESTOCK LTD**Gail Drought - Livestock Agent**4036 Main South Road, Opunake | Ph: 06 761 7012 | Fax: 06 761 7018  
Mob: 0274 509 108 | Email: seaviewfarm@xtra.co.nz

JKL

"Livestock, it's our lives"

TRANSPACIFIC  
INDUSTRIAL SOLUTIONSSeptic Tank Cleaning  
Water Deliveries  
Waste Disposal  
Drain Flushing  
WaterblastingNew Plymouth 06 755 9150  
Hawera 06 272 8725Coastal  
06 752 8138

027 255 8677

Welders

Machinery Repairs  
Structural Steel Fabrication  
Cowsheds  
Crane Hire  
Fitting & Turning  
Stainless & Alloy Fabrication  
Large Bed Heavy PressKeyway cutting & Broaching  
Digital Heavy Duty Lathe  
Turret Punching, Plate Shearing  
& Notching  
Alloy Welding  
3.5 Ton Crane TruckWe supply bearings, steel, fasteners, chain and general engineering supplies. Also hydraulic hoses, fittings and crimping.  
We are a local company training local people.  
Email us at coastalwelders@xtra.co.nz  
WAREA**MARK TATHAM BUILDING COMPANY LIMITED**  
FOR ALL YOUR BUILDING PROJECTS**30 YEARS EXPERIENCE**  
**BUILDINGS YOU CAN TRUST**  
**Renovations are our specialty**  
**For quality workmanship and a**  
**FREE quote call Mark 027 226 7327**  
**Call now to book in and get started today!**  
Phone (06) 761-8398**KURIGER BUILDERS**   
"Building homes future generations would love to own"Building creators who partner  
with their clients and deliver  
exceptional homesKURIGER BUILDERS LATEST RECOGNITION :  
GOLD AWARD IN NEW ZEALAND  
ARCHITECTURE FOR RESIDENTIAL HOUSES.

Ph Doug on (06) 761-8175 Mobile 0274 442 704

# Pike River Mine Commemorative Park

**The commemorative park honouring those who died in the Pike River Mine disaster.**

Over a year has now elapsed since the Pike River Coal Mine tragedy (November 19, 2010), which led to the death of 29 men - miners and contractors. The tragedy strikes a personal note with me as I was teaching on the other side of the Grey River several years ago at a school called Ngahere; one of the men killed was a parent, Milton Osborne and his wife Anna was on the Board of Trustees. In the South Island over the Christmas vacation, I was interested in visiting the site and also, if possible, of meeting Anna again.

Although the mine is described as close to Greymouth, in reality it is a 40 minutes' drive (31kms) from the Westland city. Pike River Coal Mine is

reached by driving inland along the road heading east. Then head north from the Stillwater Junction, along the north side of the Grey River. You drive past the nearest town to the mine - Blackball - and head north for a further 10km until you reach Logburn Road, which leads to the mine. Almost on the corner is an impressive commemorative park in memory of the dead miners. Heading west up the road for about 15 km you reach a very secure gate. It is not possible to get any closer to the mine entrance itself. A sign indicates a further distance of 7.5kms.

In light of the Inquiry, it is ironic that signs also state: 'Work safe. Play safe. Home safe'.

The rather beautiful commemorative park is made up of a monument with a plaque set in an immense rock with the names of all the men killed in the disaster. The plaque reads as follows: 'On Friday 19<sup>th</sup> November 2010 at 3.44pm, the Pike River coal mine exploded with thirty one men underground. Two men walked out and twenty nine were lost. This memorial is dedicated to those twenty nine men.' After listing the men and where each one hailed from, the plaque concluded: 'When you look

man which had such items as flowers, ornaments, toys, pot plants, messages of love and photos. The park also had a signpost pointing in all directions of the compass with the name of each person who died and where they came from. Places such as Scotland, Australia and South Africa are represented, as well as nearer places such as Greymouth and Ngahere where Milton lived.

It was pleasant to visit Anna who seemed much the same - still her friendly, welcoming self. I noticed she wore around her neck a charm consisting of Milton's name. Also at home in Ngahere were her two children Robin and Aleisha, who are now teenagers - much bigger now than as I remember them. Anna is, however, not too impressed with some of the authorities she had to deal with. She has taken Milton's place on the Grey District Council (he was an elected councillor), so she is continuing his civic work for the district.

*Rolland McKellar***The boulder with a plaque embedded, which lists all the men who lost their lives and where they came from.****SINCLAIR****FARM KILL AND PROCESSING**

• Beef • Sheep • Pigs

Call Colin or Bridgitte - 06 765 4460 • 0274 629 282

121 Cordelia Street, Stratford





# Christchurch revisited - residents getting on with life



One of the inner city buildings badly damaged by the earthquakes. This one was very close to Cathedral Square.

I lived in Christchurch for five years in the 1970s, but can't recall any earthquakes during that time. I was curious to see what the city I knew now looked like – I hadn't been back since the two big quakes.

Arriving in the city from the west we travelled a good distance before any damage was seen. However, the central part of the city was another matter. Virtually all of the CBD is out of commission – screened off by high Hurricane Fencing. Quite a few buildings didn't look too damaged, but the vital damage was doubtless hidden from the naked eye.

In some areas, such as the Arts Centre (former university site), there was heavy buttressing to hold the damaged buildings together,

with possible repair being planned in the not too distant future. The old Clocktower was one such example. In this area is Rutherford's Den, where the great scientist did his early experiments, but no visitors can visit at present.

The old stone buildings, with the Christchurch Cathedral an important example, as well as many other churches were particularly badly affected. Brick work, such as in fences, also did not fare well. Quite a few high rise buildings are condemned, although to look at they don't look too badly damaged. Obviously, there is serious structural damage.

Liquefaction has been a problem in many areas, especially in the eastern suburbs, such as Aranui and Brighton. In places we saw

big mounds of it. Dried up it looks a lot like sand mixed with grey clay.

You could walk up part of the main street, Colombo Street, south of the Cathedral Square. On both sides of the road are huge vacant spaces where buildings once stood. You could only walk on one side of the road, as Hurricane fences screened off the other side with its presumably unsafe buildings.

Statues did not do very well. Most figures had been shaken off, such as the Captain Scott one beside the Avon River, which was sculpted by his wife Katherine after his untimely death in Antarctica in 1912 after reaching the South Pole.

There were tourists about, whom, like us seemed

fascinated by all the damage. Most Christchurch people we spoke to seemed to have a philosophical attitude to the changes in their city – a sort of, "well never mind, let's get on with it". In the five days we were in Christchurch one of the four earthquakes we felt was while we were in a shopping area in Merivale – people seemed to take little notice of it. "Oh just another shake".

While we were in the city, although we were only aware of four shakes (one a day), many more were reported in the news. One day about 15 were recorded – perhaps some of them occurred at night when we were asleep. Inside the house we were staying in, there were many cracks, especially where walls met. The exterior also showed a good number of cracks. We were assured they were not structural, but I didn't like the look of them. At very least, they must detract from the resale value of the property.

Many relocations have occurred and quite a few shops displayed signs saying where they had relocated to – Riccarton was a popular destination. And not just shops. The Court Theatre,

*Continued page 12*

## Turn Heads

Phone 06 761 7466

88 Tasman Street, Opunake, Taranaki

Tue-Fri 9am-5pm  
Late nights & Saturday  
by appointment.

*Style your hair with  
Rhonda*



Taranaki wide sales, hire and service.  
Free delivery, competitive prices.

**MOBILITY SCOOTERS  
and all living aids - we'll help you  
with whatever you need.**

**Kevin & Marilyn Bromell**

279 Broadway Stratford

Ph (06) 765-7633

Freephone 0800 765 763

www.mobilityandmore.co.nz

## Back<sup>to</sup>School

### Backpacks



### School Shoes



### MUFT!



Quality Bikes.  
Quality Accessories.  
Awesome Service.

**MACH1**  
YAMAHA

*We ride what we sell*

**Yamaha WaveRunners**  
– coming soon to MACH1 Yamaha!

**WaveRunner** Built for a lifetime. Designed for the moment.

106 – 116 Leach Street, New Plymouth | Ph: 06 757 9747  
www.mach1yamaha.co.nz

**Opunake dreamtime**  
Surfboards – Clothing – Wetsuits – Repairs Surf Shop

102 Tasman Street, Opunake Phone/Fax: 06 761 7570 E-mail: dreamtimesurf@xtra.co.nz



# Opunake Beach Carnival



## Mr Mini Muscles

Samuel Drought from Opunake won the Junior Mr Muscles competition (LEFT).

The weather held out beautifully for the annual beach carnival at Opunake. As with previous years there was a great turnout with plenty of activities throughout the day, such as IRB rides and food stalls. Congratulations Opunake Lions Clubs for a superb carnival.



## Right I'm off

Big dig 0-4 winner Ryder Scott has no time to chat after collecting his brand new trike at the Opunake Lions Big Dig!

## Christchurch revisited - residents getting on with life

*continued from page 11.*

once located in the out-of-bounds Arts Centre, has shifted to an old warehouse in Addington where we saw a Roger Hall play. Many buildings had an official report attached to the door specifying the status of the building and zoning.

Like a Phoenix rising

from the ashes a busy shopping centre, made from containers, has been created - it is called 'Restart'. It was very busy indeed, it was located at the western end of Cashel Street - the rest of the street is screened off.

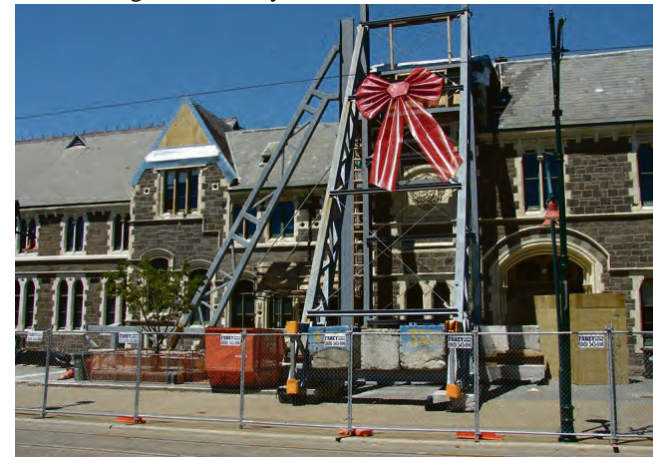
There were quite a few intriguing sights, such as building spires, which had fallen down and sat like rockets waiting to be levered by crane back to their original place.

Many building of historical and literary significance have been damaged or destroyed.

We were shown one which has sustained damage, but has survived. It is Dame Ngaio Marsh's home at 37 Valley Road, Cashmere, where the writer-painter-thespian lived for most of her long life.

Christchurch people seem to have a positive attitude to their situation. I got the feeling that, in several years - perhaps five - the city will be back to normal, despite the regrettable loss of so many important buildings and the sad loss of life.

*Rolland McKellar*



The Arts Centre buttressed - awaiting structural repair. 'Rutherford's Den' is in this building.



An open top bus shows visitors some of the damage in Christchurch.



**IN STOCK NOW**



Available with side by side as well. 2 or 3 seaters.

**Available in**

- 450cc, 550cc, 700cc
- Built for comfort
- Made to work - heavy duty machine
- Built to last - American built
- Automatic
- Excellent stability.

**For a demonstration call Garry Miles on 0272 932 356**



**AgTraction** Taranaki Sales, Parts, Service

643 Devon Road, Waiwakaiho.

Ph 06 759 8432 | [www.agtraction.co.nz](http://www.agtraction.co.nz) | Paul Stanton 0274 403 074 | Garry Miles 0272 932 356

# SANDFORDS RURAL CARRIERS

## Rural & General Cartage

Specialising in

- Palm Kernel
- Fertiliser
- Aggregate
- Hay & Silage Bales

## Livestock Cartage

Depots: Okato, Auroa, Hawera & Waitara

## Readymix Concrete

Depots: Hawera & Wiremu

## Ground Spreading

4WD Trucks spreadmark certified, GPS proof of placement.



**0508 726 336 or 06 274 5852**





# Opunake Lions Big Dig



... and go Nigel Robinson signals the start of the Opunake Big Dig.



## Welcome to Summer

**HATS** - for men, women & kids.

Great selection - latest styles.

**SCARVES** - Beautiful lightweight colours and styles.

**SUNBLOCKS** - Sunsence, Aveeno, Zinc Sticks and many more.

**INSECT REPELLENTS** - Natural, Organic, Roll On's and Spray On's.

**Back in stock** - Anti Mosquito Bracelets to wear around wrists and ankles.

**Manaia Pharmacy**    **Opunake Medicines, Health & Beauty Centre**  
 47 Main St, Manaia    38 Tasman St, Opunake  
 Phone 0800-367-232    Phone 761-8144

## Opunake Golf Ball Roll

**RIGHT:**  
 The popular Opunake Golf ball roll was held at Middletons Bay on the 6<sup>th</sup> Jan with over a hundred keen participants.



**GREAT SERVICE,  
 GREAT RANGE,  
 AND GREAT DEALS!**

AT MORRIS & OCKHUYSEN BETTA ELECTRICAL,  
 YOUR LOCAL APPLIANCE EXPERTS!



### NEW MITSUBISHI FRIDGES

325B Model

Mitsubishi 325L  
 White Bottom  
 Mount Fridge  
 Freezer

**Features include:**

- fruit and vegetable drawer
- tempered glass shelves
- a double twist ice maker
- multi airflow system
- large door pocket
- door alarm system on both doors
- anti-bacterial food liners and a titanium filter create a hygienic environment for your food.

**\$1199.99**

### CONGRATULATIONS

George Whiu, winner of the Haier Small Appliance Prize Draw Pack. Valued at \$300.

**Betta**  
ELECTRICAL

PROUDLY NEW ZEALAND OWNED & OPERATED

MORRIS & OCKHUYSEN  
 31 Tasman Street, Opunake  
 Phone: (06) 761 8047

www.bettalelectrical.co.nz

## COST EFFECTIVE & EFFICIENT HARVESTING



- 2 x 6 metre Mower Conditioners
- Turning
- 3 x Raking
- 4 x Round Balers:
  - 2 x Krone Vario
  - 2 x Krone combipacks
  - Multi Cut available

**Hay Bales from \$14**  
 (per bale)

- 2 x loaders for bale stacking
- Ute and individual wrapper
- Trailers for transporting bales
- Claas big square hay baler

**Baled & wrapped from \$23\***

Conditions apply

- Ground cultivation • Roll drilling
- Direct drilling

**SEA BREEZE CONTRACTING LTD**

PH: JARED GRAY (M) 0274 473 954 (A/H) 06 752 8171



# Kaupokonui Beach Family Fun Day

The popular Kaupokonui Beach Day was resurrected this year by a group of 15 campers who decided to bring a family themed day back to the beach! While the day had a damp start the sun came out for the afternoon events. There were many activities on offer with Duck

races, fishing competition, big dig, competitions, helicopter rides Bouncy castle, Baby Competitions, Mr Muscles, Junior and Miss Kaupokonui competitions with many craft and food stalls set up and qualified surf lifesavers on patrol for the day. Musician Rick Cople-

stone was popular with the early crowd and compere Andrew Gibson excelled in his role on the day. Secretary Tina Coombe said that organising the carnival was more challenging than expected and there is always room for improvement. They have some great ideas for the January 13, 2013 Kaupokonui Beach carnival.

## BELOW:

Emily Grant from Manaia gets a helping hand from her big brother Patrick at the Kaupokonui Beach Big Dig.



## ABOVE:

Crowds line up to watch the second duck race at the Kaupokonui Beach Carnival.



## Mixed Doubles Tennis Tournament



- Manaia Sports Complex
- Wednesday, February 16th, 2011  
(Thursday 17th if wet.)

- Assemble 9.15am,

Play commences 9.30am sharp

Open to all farmers and their spouses

Sections ranked on ability

Top Section Only 1 Sofie Cup Player per Pair

Guaranteed 3 matches for everyone

Limited to 32 Pairs

**Great Prizes to be won**

Entry fee \$12 per Player

Entries to Alister Murdoch ph(06) 2748242 or Lesley Landers

(06) 274 8779 by **February 15th**

*In association with:*



**RAVENSDOWN FERTILISER CO-OPERATIVE**



**Darryll Eliason**  
our Coastal sales  
consultant is in your  
area every week.

53 Rimu Street, New Plymouth  
• [www.altherm.co.nz](http://www.altherm.co.nz)  
Phone 06 758 5411 or  
0800 278 418



**ALUMINIUM  
TARANAKI 2006 LTD**



**Kaupokonui Fishing Competition Winner Angel Campbell.**

Angel won a new fishing rod for the heaviest fish caught on the day.

Do you know  
what you what  
happens if you  
don't advertise?

Nothing

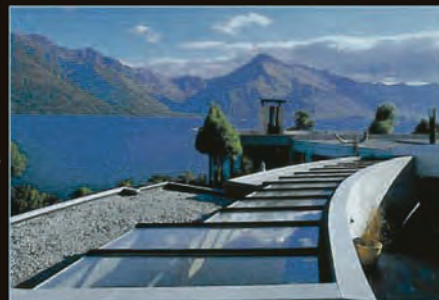
## WHY CHOOSE CENTRAL ALUMINIUM?

*Because we do it all ...*

- We have been serving Central Taranaki for 40+ years
- We know the climate and we understand what people want
- We're committed to providing quality service with helpful and friendly advice.

## DOUBLE GLAZING

creates a warmer home, is great for noise reduction, as well as saving costs on heating.



*Call us today for all of your enquiries.*

## CENTRAL ALUMINIUM LTD

86 JULIET STREET • STRATFORD • 06 765 7369  
[www.centralaluminium.co.nz](http://www.centralaluminium.co.nz)



**SIMPLY SUPERIOR**

## BRIAN CRAWFORD CONTRACTING LTD

- Truck and trailer for general cartage.
- Digger Hire, Tractor-Trailer Hire.
- Race Fines, Tanker Track Metal and Drainage Chip.

## Cultivation

- Ploughing • Rock Crushing • Roller Drill
- Undersow or Direct Drill • Levelling
- Rotohill- Giant Discing

## Silage

Pit or Stack Silage with Loader Wagons  
Rolling Stack

## Round Silage Single Wrap

Single bale stacking

## Round Hay,

## Square Hay

## Scatter

## Raking

## Mowing

**Hay for Sale**

**NO JOB TOO BIG OR TOO SMALL !!**

**PHONE/FAX: 06 763-8868**

**MOBILE: 0274 447 482**

**506 NGARIKI ROAD, RD 34, RAHOTU**

## JANUARY SPECIALS

### MS 211 Chainsaw

Power to weight ratio that is second to none. Ideal for cutting firewood and keeping trees in shape.

**\$695**

**SAVE \$100**



### HS 45 450 Compact Hedgecutter

Compact and lightweight HedgeCutter for trimming and shaping hedges in domestic and light-commercial applications.



**\$595**

**SAVE \$200**

### FS 38

### LineTrimmer

Powerful and durable line trimmer for domestic trimming and lawn edging.

**\$237**

**SAVE \$100**



Right into Outdoor Power Equipment

**PHONE (06) 761 8778**

**COLLINS SPORTS CENTRE**

Tasman Street, OPUNAKE

**STIHL**

Outdoor Power Equipment



# A first in NZ

Urea in Opunake will now be available 24 hours a day 7 days a week due to the latest technology installed by Ravensdown fertiliser company, says Mike Davy. A fully automated silo has been installed and is accessible to Ravensdown customers who are issued with a personal swipe card. Once the customer has keyed in their tonnage requirement and completed the

transaction, an email is automatically sent to the Ravensdown Customer Centre and an invoice is generated. The silo holds 14 tonnes of product and a sensor probe will automatically activate a refill once the silo is empty. Additional to this technology, we are investigating a bulk text (SMS) being sent to all current card holders to advise them when the silo is empty to avoid customers turn-

ing up to find the silo empty. This bulk urea facility is a first in the country and Opunake is a trial to build a business case to roll out to other areas. Mike said Ravensdown will replace the 14 tonne silo with a 19 tonne silo in the New Year. Farmers wanting to uplift urea from this silo should contact John McFadgen on 021 900 215 so that he can set them up with a swipe card which will give them access to the facility!

RIGHT

Explaining how it works.



The new technology attracted a lot of interest among farmers.



For all your agricultural machinery and parts contact  
**GARRY MILES**  
Your Coastal Rep  
Living locally.  
Available 7 days a week  
Workshop on call.



**AgTraction** Taranaki Sales, Parts, Service  
Waiwakaiho  
0272 932 356  
06 759 8432  
www.agtraction.co.nz

## ALUMINIUM JOINERY

**Rylock**

- Windows
  - Bi-Folds
  - Sliding Doors
  - Entrance Doors
  - Conservatories
  - Garage Doors
  - Inserts/Retro Fitting
- Call today for a free measure and quote

IN YOUR AREA  
EVERY WEEK.  
**Ph: (06) 758 8073**  
Fax (06) 758 4157  
Email: andrew@rylocknp.co.nz  
Web: www.rylock.co.nz

## Wish it was easier to get your fertiliser?

Now it is, with Ravensdown's first automatic, 24/7 silo.

Call us now on 0800 100 123 to find out more.

For your Personalised Swipe Card Phone Johny McFadgen 021900 215

Leading the way in agriculture  
0800 100 123 www.ravensdown.co.nz



# ARION 600

The ARION 600C series is packed full of features ; 6 cylinder 130 - 155hp, 40KPH transmission with 16 forward / 16 reverse gears, Power Shuttle with 4 speed powershift, 4 speed PTO, 4 corner cab suspension.

Contact you local CLAAS Harvest Centre today and cash-in on exceptional value.

Peter Marshall 027 279 7099  
Steve Roylance 021 287 5335  
www.claasharvestcentre.co.nz



**CLAAS**  
Harvest Centre  
Taranaki



## IHAIA MOTORS

for

### A GRADE REPAIRS

- Tyres • Batteries
- Lubes • W.O.F
- Panel beating • Painting
- Farm Bikes • LPG
- All mechanical repairs
- Insurance work
- Radar Detectors

### AT COMPETITIVE PRICES.

Tasman St, Opunake  
Ph (06) 761-8502

**Call us to  
advertise in this  
space on  
(06) 761-7016.**

With many wet days this season some competitions have had to be rescheduled. Club triples were won by Eileen Rothwell, Heather Radford, Val Wallace and Val Langton (yes, I do know that there are four names!).

A very good day was held on Nov 7<sup>th</sup> for the Police Triples: 1<sup>st</sup> V Watson, 2<sup>nd</sup> D Wadsworth.

Scottish Quaife Mixed Multi was won by E Rothwell, R Johns, T Kettlewell and Allan Harvey.

Julian Pairs, a women's event held for current or former Western Division players. Hosted by Rahotu and held at Opunake. 1<sup>st</sup> P Symes and Barbara Harvey, 2<sup>nd</sup> A Nathan and T Kettlewell.

# Opunake Bowling Club



Some members of the Gatenby family with the Trophy they donated to the Opunake Bowling Club in memory of their mother Carol. The trophy is being presented to President Nell L'Ami.

Championship Fours final was won by Joy Collins, Nel L'Ami, Kay Fleming and Val Langton. R/up E Rothwell, Kath Perrett, T Kettlewell and B Harvey.

Our mixed mufti Xmas day was happy and enjoyed by all players. A pot luck tea was held afterwards. The family of our late member Carol Gatenby attended and

presented the ladies with a lovely trophy to be used for the Club Triples.

Potluck day was won by Joy Collins, Wilma Crawford, Val Wallace and Allan

Harvey.

Congratulations to the men for winning the Premier Section 5 which was Taranaki wide. Darryl Read won all his singles games.

## PATRICIA LEWIS

pixielittlehouseflowers@yahoo.com  
PHONE (06) 756 8781

## THE LITTLE HOUSE OF FLOWERS

Flower Market

54 Rata Street  
Inglewood  
Taranaki 4330

## Jonathan Young

MP FOR NEW PLYMOUTH

NEW PLYMOUTH OFFICE  
Corner of Liardet and Gill Street  
Office hours: 9am - 4.30pm Mon- Fri  
P: 06 759 1363 | F: 06 759 1364  
E: newplymouthmp@parliament.govt.nz

National  
www.national.org.nz

## 188.8 kgs lost in the third Okato Weight Loss Challenge

The third Okato Weight Loss Challenge presentation night was held on Wednesday night the 14<sup>th</sup> December. This Challenge was a bit different this time around as the duration was only 9 weeks compared with the last two which went for 12 weeks.

The largest percentage of weight loss winners went to the following participants. Winner - Louisa Kemsley from Okato who won the challenge with a weight loss of 11.8kgs (16.53% of her body weight). Well done Louisa! Cindy Gray from Rahotu came in second and

lost 11.8 kgs (13.33% of her body weight). And third prize went to Wendy Mullan from Rahotu who lost 11kgs (12.40% of her body weight). Congratulations!

The largest cm lost went to

the following participants. Lynette Collins from Opunake was the winner of the most cms lost with 47.5 cms lost over the Challenge. Caroline Charteris was runner up and lost 45cm. At

the start of the challenge the participants are measured around the upper chest, chest, waist, hips, thighs and upper arms.

*Continued page 17.*

**Metallic Recycling LTD**  
**SCRAP METAL BUYERS**  
**Andy** Taranaki Licensed Buyer

• Copper • Brass • Ali • Steel • Stainless • Batteries

**PH: 027 255 4929**

**EQUINE SERVICES AND TRAINING FACILITY**  
**WHERE WE FIX BROKEN HORSES**

**DAVID STEWART**  
**HORSE WRANGLER AND NATURAL FARRIER**

**SPECIALISING IN**

- FLOAT LOADING
- FIRST CONTACT HANDLING
- BEHAVIOURAL PROBLEMS
- NATURAL HORSEMANSHIP LESSONS
- CORRECTIVE TRIMMING
- RIDING LESSONS

**60 WELD ROAD OAKURA**

**027 629 5056**  
**a/h 06 752 7454**



## JOIN THE COMMUNITY WEIGHT LOSS CHALLENGE!

## BE THE BIGGEST LOSER AND WIN!

Starting Wed 8<sup>th</sup> Feb, 7.00pm  
@ Opunake Medical Centre

Only \$49 for 12 wks. Weekly weigh ins, Nutritional Coaching, Cash Prizes, Group Support & much more!  
Tons of fun!

Class size is limited so register now

Ph: Claire 06 7638393

or Sharron 06 7524844

To register online: [www.yourchallenge.co.nz](http://www.yourchallenge.co.nz)



# Take a Kid Fishing

The annual take a kid fishing was held on Wednesday 4<sup>th</sup> January and over a hundred children registered, while there were many species of fish including herring and eels Iritana Hohaia managed to hook herself a 1.52 kg crayfish.

The top place getters on the day were Tyrel Jones -Eel -4.16, Glenn McLean-Trout-1.16k, Alyssa Coombe - Greenbone- 1.3.

## RIGHT!

Brian Collins (left) with Ethan Williams the lucky winner of the rod and reel draw and fellow organiser Paddy Walsh at the annual Take a kid fishing competition at Opunake. Ethan has happily taken his prize home to the Sunshine coast Australia.



# 188.8 kgs lost in the third Okato Weight Loss Challenge

*Continued from page 16*

This is done again at the final weigh in and the top two people who lose the most cms (who are not in the top three weight loss percentage winners) are recognised.

Congratulations to all participants. I had 32 participants who registered for the Challenge and 27 participants who attended the final weigh in. The total weight loss between the 27 was 174.10 kgs with an average weight loss of 6.45 kgs each for the challenge. What a great result! 776.5cms was lost amongst the final 27 which averages out to be a loss of 28.76 cm each.

We had loads of fun during this challenge and covered many different topics. During the exercise topic we had a special speaker come in and talk about her Services (Brenda Crummey from Oakura). Brenda is an Exercise Incentive Motivator and will design an individual fitness and exercise program specific to the individual and will then monitor and help their progress over six weeks. Brenda has studied Sports and Exercise at Otago University and graduated in 2010. If you would like further information on Brendas services please phone her on

06 7521282.

Ultimately, I try and educate people to focus on their health when they are thinking about losing weight on the challenge. So many people are in a hurry to lose weight. They spend their entire lives putting on the weight, losing the weight temporarily on diets and just want to get rid of it as fast as possible. They are not necessarily focused on improving their health, which should be one of the main factors in their weight management. Even if you are losing weight slowly, good for you! The idea here is to take off the weight and keep it off for good. Even just one kilo a month adds up over the course of a year.

Because of the fantastic support which we are receiving from the Opunake region it is with great excitement that we announce the next Weight Loss Challenge will be held in Opunake!! This challenge is scheduled to start in the second week of February 2012. If you are interested in registering for the Opunake challenge please contact Claire on 06 7638393 or Sharron on 06 7524844. There is limited spacing so be quick.



## ABOVE:

Jamie Ratahi and his little cousin Zabian Heemi fishing out at the old wharf Opunake during the Take a Kid Fishing Competition

To advertise  
call us on  
(06) 761-7016

**Chester Borrows**  
MP FOR WHANGANUI

Hawera Office  
44 Victoria Street  
Ph: 06 278 4059  
chester.hawera@parliament.govt.nz

**National**  
www.national.org.nz

## WOFs & SERVICING

- \* Grease & oil
- \* Tune ups
- \* Exhaust systems
- \* Brake & clutch repairs
- \* Cambelts replaced



## GET YOUR CARS TUNED & SERVICED

by the team at

## OPUNAKE AUTO REPAIRS

Ph (06) 761-8161 • DOMETT ST, OPUNAKE

## Maxwell Engineering and Mechanical Services

Howard Maxwell  
548 Dover Road  
Okato

027 257 5299

howie.m@hotmail.co.nz

## General Engineering and any Mechanical Repairs

## TRAILERS ...



For all your  
**STRUCTURAL  
STEEL  
&  
PIPEWORK**  
contact  
Richard at

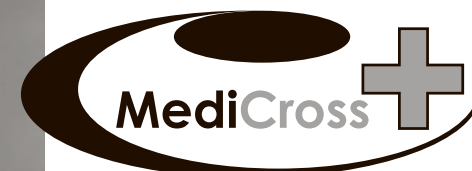
## HOLLARD ENGINEERING 1979

## ATTENTION FARMERS We do puncture repairs

(R P & E M Bartley - Proprietors)  
16 Victoria Street, Kaponga

Ph (06) 764-6686 Fax 764-6685 a/h (06) 764-6432

## Accident & Medical Clinic



Clinic hours 8am-8pm  
No appointment needed  
24 hr urgent medical care  
**X-ray  
Pharmacy**

## OPEN EVERY DAY

Richmond Centre  
8 Egmont St New Plymouth Ph(06) 759 8915

by the wind wand

ACC and RNZCGP Accredited

CHECK OUT OUR NEW WEBSITE:

[www.opunakecoastalnews.co.nz](http://www.opunakecoastalnews.co.nz)



## WHAT'S ON

### POKER NITE

Wednesdays at the Opunake Surf Inn. Refer advert.

### PRE SEASON TRAINING FOR ALL COASTAL RUGBY AFTERNOON GRADES

Thursday, January 26 at the Oakura Surf Club at 6.30pm.

Tuesday, 31<sup>st</sup> January at the Rahotu Rugby Club at 6.30pm and

Thursday, 2<sup>nd</sup> February at the Rahotu Rugby Club at 6.30pm. Refer public notice.

### OPUNAKE HIGH SCHOOL 2012 TERM 1 START DATES

School office opens from January 23 for new enrolments.

January 30 – Staff Only Day.

January 31, Year 11, 12 & 13 students meet with deans from 9am in school hall.

February 1, All students attend. Refer public notice.

### FIRST DAY OF ST JOSEPH'S PRIMARY SCHOOL, OPUNAKE

Wednesday, February 1<sup>st</sup>. School office opens on Monday, 30 January 10am-1pm and Tuesday, 31<sup>st</sup> January from 9am-2pm. Refer public notice.

### OPUNAKE & DISTRICTS BUSINESS ASSOCIATION MEETING

Tuesday, Feb 7 at the Opunake Surf Inn at 6pm. Refer public notice.

### KARAOKE WITH ROXANNE

February 11 at the Opunake Surf Inn. Refer advert.

### SOUNDS ON THE SAND WITH "HARD CANDY"

Sunday, February 12 at 1pm at the Opunake Beach. Then head to Opunake's Everybodies Theatre to watch the musical "Footloose" at 7pm. Refer advert.

### LIFE BEGINS AT 50 EXPO

Thursday, February 16 at the TSB Hub from 10.30am to 2.30pm. Refer advert.

### OPUNAKE PLAYERS INC ANNUAL GENERAL MEETING

Sunday, February 12 at the Lakeside Playhouse. from 6.30pm, meal at 7pm and meeting to follow. Refer public notice.

### TE KIRI SPORTS & RECREATION SOCIETY – SCHOLARSHIP GRANTS

Grant forms to be returned by February 20. Refer public notice.

### 'MAROPU'

February 25 at the Opunake Surf Inn. Refer advert.

### ROGAINE CHALLENGE SERIES

Wednesday 1 Feb and Wednesday 8<sup>th</sup> Feb  
Registration at Kiwi Outdoors from 5.30 pm  
Race Orienteering contact Mike Fay  
0272520129 or NPDC 06 7596062

### 'SOULOVUS'

March 3rd at the Opunake Surf Inn. Refer advert.

### OPUNAKE RAHOTU VETERINARY TRUST

Grant applications close March 1st

TO GET YOUR EVENT INTO  
THE NEXT PAPER, FEBRUARY  
9, GIVE US A CALL ON  
(06) 761-7016.

### WANTED TO LET

**WANTED** house to rent 2-4 bedrooms, in or near Opunake. Vacant farm house would be ideal. Ph 027 469 1810.

### GARAGE SALE

**RELOCATING** something for everyone. Sat, Jan 28, 8.30am start at 165 Tai Rd, Oaonui. Rimu furniture, sunbed, new bikes, lots of household items. Bargains for all.

### RAFFLE RESULT

**VOICE FOR LIFE**  
1st D Reynolds, 2nd I McMahon, 3rd J Van der Sar, 4th P Gopperth, 5th R Karam. God bless you all for your support in helping saving our unborn babies.

### TRADES & SERVICES

**ARCHITECT** & interior designer available for home alterations. Contact Mark on (06)758 7064 or 027 507 8113.

### FARMERS

Summer's here. How are your troughs? Get rid of weed, slime and scum.  
**COASTAL CLEANING**  
027 237 8563

### WANTED

**BOOKSHELVES** wanted  
Phone (06) 761-7016 or a/h (06) 761-8206.

### LIVESTOCK

**WANTED STEERS**  
**Rising** two-year-old or older, also heifers, cull cows and bulls. Immediate payment and pickup. Ph (06) 761-8192.

### FOR HIRE

**NEED EXTRA ROOM?**  
Move a cabin to your site. Many uses. Power, insulated. 3.6 x 2.4m. Minimum hire 6 months. Very smart appearance.  
**\$50 pw**  
  
**Ph 0800 111 344 or 06 754 8421**

### FREE

### HOMES URGENTLY NEEDED FOR KITTENS

1 black and 3 tabby kittens.  
Ph (06) 761-8789.

### WANTED TO RENT

**HOME** wanted by farming family, 3 b/d plus, within 10 minutes of lower Arawhata Road, Rahotu. Phone 027 311 7505, 06 752 3446.

### WORK WANTED

#### Coastal Cleaning Services

**If it needs cleaning - you need me.**  
20 yrs exp. Inside or outside.  
No job too big or too small.  
**Ph 027 237 8563**

#### LOOK AT THIS - HEADSTONE SPECIAL

**\$1000 plus GST**  
450 x 600 x 80mm  
CAMBER STONE  
900 x 300 x  
100mm BASE  
SEA GREY  
Some conditions apply  
**CREATIVE STONE**  
**06 751 2177**

## Qualified Builder

**Decks, Fences, New homes, Additions and Alterations, Farm Sheds.**

Phone Lucas:  
**027 746 0186**  
**a/h (06) 761 7541**  
No job too small

### WORK WANTED

**COASTAL GIB STOPPERS.** Phone Glenn  
027 524 5745.

**WORK** wanted. Available for cleaning, childcare, tutoring, admin, writing/editing and more. Please contact Tui Wilson (06) 761 7593 or 027 346 9610.

### PUBLIC NOTICES

#### SITUATIONS VACANT

#### SITUATIONS VACANT



#### Sponsor/Membership Coordinator

10-15 Hours Week - Paid Position.

For Information please phone  
Peter Burnnand  
06 761 8231.

#### SITUATIONS VACANT

**MATURE** women for housekeeping in Opunake. 3 hours twice weekly. Ph Heather (06) 761-7557.

#### FOR SALE

**BAIT** new bait in stock. Baby salmon 1 kg bags and saltwater flake ice 5kg bags available from COLLINS SPORTS CENTRE, Opunake, Ph (06) 761-8778.

**CARPETS** second hand, large selection GARDNA CARPET SERVICES 223 Devon St, West, NP. Phone (06) 758-0837.

DO you suffer from lactose intolerance? Now at Hardy's. Lacto 30s prevents bloating and is a complete digestive support for cheese and milk. Ph 758755

**ENVIRO SOY CANDLES** Phone Margaret (06) 764-6206 or 027 290 8910.

FOOD sensitivities are common; symptoms such as bloating, nausea, gas, diarrhoea, even skin rashes or a cough are associated with poor digestion. New Digest spectrum will help. Now at Hardy's the Health Shop in Centre City, Ph 7587553.

**To advertise call us on  
(06) 761-7016**

#### FOR SALE

GLUTENEASE for inability to digest gluten. Do you suffer from bloating, pain, tiredness after eating bread. Try the new GlutenEase. Now at Hardy's the Health Shop in Centre City. Ph 7587553

HEART BURN! Acid soothe chewable contains digestive enzymes to promote absorption of nutrients and help maintain digestive health, zinc carnosine to promote a healthy gut as well as supporting repair of the gastro intestinal tract. Take this to repair not cover up symptoms of heartburn. Safe to use with ulcers. Now at Hardy's the Health Shop in Centre City. Ph 758 7553

**NEW MAP** Scooters for sale at Collins Sports Centre, Opunake

SUGAR FREE gift trays with delicious carob at Hardy's the Health Shop in Centre City. Ph 7587553. We deliver.

## TRUE EXPOSURE

Place MULTIPLE ADS across the country  
**one transaction one account**

Offer applies to display advertising - minimum size of a quarter page per advertisement.

Visit any of our member newspapers to place your advertising campaign through the NZCNA advertising network.

**www.cna.org.nz**

Our newspapers have coverage throughout New Zealand in more than 50 community newspapers going to more than 1,692,121 homes.

**Total Circulation for NZCNZ 1,692,121**

**nz community newspapers**  
Assoc. • INC



## PUBLIC NOTICES

**Reflections****Counselling Services**

89 Regan St, Stratford

Tuesday &amp; Wednesday

by appointment

Ph 06 765 8280

Faith Smith MNZAC

Diploma in Counselling

WelTec

**Te Kiri Sports and Recreation Society**

Calling for applications  
for **Scholarship Awards**  
by 20th February.

Applications Forms  
Available.

Mike Starsmore

06 761 7228.

Margaret Mullin

06 761 7294.

**OPUNAKE  
PRIMARY  
SCHOOL**

Opunake Primary would like to thank all parents, whanau and wider Opunake community for their amazing support during 2011.

On behalf of the Board of Trustees we wish the community all the best for Christmas and the New Year.

We would like to wish our Year Eight students all the best for 2012. We look forward to working with all prospective students and families next year!

Open for enrolments on 30th and 31st January 2012, between 10:00am and 1:00pm.

Opunake Primary welcomes new enrolments to our school.

School is open for instruction on Wednesday 1st February 2012

**OPUNAKE RAHOTU  
VETERINARY TRUST**

Financial assistance is available to students to undergo tertiary education relating preferably to veterinary, agriculture or horticultural studies although consideration will be given to other applicants.

Preference will be given to students from the area from Awatuna to Pungarehu.

Applications forms available from:-

The Secretary  
PO Box 117  
OPUNAKE

**APPLICATIONS CLOSE 1 MARCH 2012.**

**Opunake & Okato Co-operating Parish  
CHURCH SERVICES****St Paul's Opunake Co-op & Raho**

**Opunake** Cooperating Parish St Pauls, Havelock St,  
9.30am every Sunday and the

**Rahotu** - Wesley - 11am first Sunday of the month.

**Oakura** - St James - 10am, 2nd & 4th Sundays.

**Okato** - St Pauls - 10am, 1st & 3rd Sundays.

**Opunake Catholic Church**

**SUNDAY 8.30 am at Pungarehu** (St Martins),  
**10am at Opunake** (Our Lady Star Of The Sea).

**Other areas**

Manaia - Sacred Heart - 1st & 3rd Saturdays at 5pm  
(2nd, 4th and 5th Sat at Hawera's St Josephs).

Kaponga - St Patricks, Sunday 8.45am

**ALL WELCOME**

## PUBLIC NOTICES

**Pre Season Training  
For All Afternoon Grades  
6.30pm**

**Thursday, 26th January at Oakura Surf Club**

**Tuesday, 31st Jan at Raho**

**Thursday, 2nd Feb at Raho**

Any enquiries call:

Senior As - Joe Lawn 021 575 296

Senior Bs - Ray Hayward (06) 763-8668

Senior 3rds - Muzz Horo (06) 763 8242

Under 21s - Richard Corey 027 724 0270

B J Kettlewell - Club Captain 027 229 8932

*All players to attend and New Players welcome.*

**Transfer your home  
video movies to DVD  
Phone 027 459 9382****St Joseph's School Opunake  
and the Board of Trustees**

*welcome existing and new families  
back to school*

**on Wednesday 1st February 2012.**

School Office will be open:

Monday 30th January 10:00am-1:00pm

Tuesday 31st January 9:00am-2:00pm

**Opunake Players Inc  
ANNUAL GENERAL  
MEETING**

**Sunday, February 12, 2012**

Lakeside Playhouse, Pot Luck Tea

from 6.30pm, meal at 7pm. Meeting to follow.

*Everyone welcome.*

**THANK YOU**

The Opunake & District Foodbank would like to thank the community groups, schools and many individual people for the wonderful donations of money, food and toys that have been so generously given. We are only a very small community but the kindness of the people in this community is overwhelming.

I would especially like to thank a lovely little 7-year-old girl that won a grocery raffle recently and unselfishly donated most of the contents to the foodbank.

We look forward to the continuing support over the year.

The Committee and myself of the foodbank wishes everyone best wishes for 2012.

*Margaret Brandt (Chairperson)*

## PUBLIC NOTICES

**OPUNAKE HIGH SCHOOL****Te Kura Tuarua o Opunake**

Opunake High School welcomes all students to the 2012 school year. We invite prospective students to enrol from Monday 23<sup>rd</sup> January.

School starting dates are as follows:-

23 January	The office opens. New enrolments can be taken from this date.
30 January	Staff Only Day.
31 January	Year 11, 12 & 13 students meet with Deans to finalise courses from 9.00am in school hall.
1 February	All students attend. Powhiri 9.30am parents and whanau welcome. Year 9 students are to assemble outside the hall at 8.50am.

It is essential that Year 11, 12 & 13 students attend the 31<sup>st</sup> January meeting, buses will run from Pungarehu, Kaponga and Manaia.

For enquiries and enrolments please phone our school office on 06 761 8723

Maria Potter  
Principal

**Opunake Business Association****MEETING**

**Tuesday, Feb 7, 2012**

at 6pm

at the Opunake Surf Inn

*We welcome any member of the community to our meetings, you don't have to have a business.*

**CALL FOR NOMINATIONS  
South Taranaki Creative Communities  
Assessment Committee**

The arts help us define who we are. They are the richness of our country and the arts of New Zealand are flourishing in our culturally diverse communities in a range of ways.

**Do you want to be involved in building participation in the arts at a local level as well as increasing range and diversity of arts available to your community?**

The South Taranaki Creative Communities Scheme is seeking nominations for its Assessment Committee, specifically representatives for the Hawera, Eltham, Patea and Egmont Plains Wards and youth (15 to 24 years).

The Creative Communities Scheme is jointly administered by Creative New Zealand and the South Taranaki District Council. The Assessment Committee is representative of the community and makes the funding decisions on a local level. Committee members meet twice a year to make impartial assessments of applications based on the scheme's criteria and assessment policy.

If you are an arts practitioner, or a young person aged between 15 to 24 years, or from the Hawera, Eltham, Patea or Egmont Plains Ward areas and have an interest in the arts (whether it be language, arts and literature, performing arts, visual arts or arts with cultural links) please complete a nomination form.

**Nominations close on  
24 February 2012 at 4.30 pm**

To get a nomination form go to the South Taranaki District Council website [www.southtaranaki.com](http://www.southtaranaki.com) or contact Maryse Ropiha - Community Funding Advisor on [maryse.ropiha@stdc.govt.nz](mailto:maryse.ropiha@stdc.govt.nz) or phone 0800 111 323 or 278 0555.

FOR ADVERTISING PLEASE  
EMAIL US ON

**[ads@opunakecoastalnews.co.nz](mailto:ads@opunakecoastalnews.co.nz)**

Check out our website:

**[www.opunakecoastalnews.co.nz](http://www.opunakecoastalnews.co.nz)**





**YES**  
**CHADDY'S**  
**CHARTERS**  
**ISLAND TOURS**

Free museum.  
New tandem mountain bikes  
and kayaks for hire.  
Also trips to seal colony and  
marine park.  
*Also Gift Vouchers.*  
**Open Daily**  
**Ph 06 758 9133**



**Movie Meal Deal \$25**  
*Great as a gift voucher - affordable fun*  
**Takeaway Shop Now Open**  
**Hours: 7 Days 11am until late**  
**58 Victoria St, Hawera Ph (06) 278-5647**



# Stoney Oaks babies in the new year



**ABOVE:**  
These two beautiful  
baby goats are en-  
joying the summer  
weather.

**RIGHT:**  
This very cute pos-  
sum is enjoying the  
limelight and cuddles  
at the Stoney Oaks  
Wildlife Park in In-  
glewood.

**WHAT'S ON**

**WHAT'S ON**

**WHAT'S ON**

**Everybody's Theatre**  
72 Tasman St, Opunake Tickets \$8 ea

**REAL STEEL**  
M, FAMILY, ACTION, SCIENCE FICTION 2hr 7mins  
Contains violence  
**Friday 16<sup>TH</sup> December at 7pm**  
**Sunday, 18th December at 7pm**  
Set in the near future, where robot boxing is a top sport, a  
struggling promoter feels he's proud found a champion in a  
discarded robot. During his hopeful rise to the top, he discovers  
he has an 11-year-old son who wants to know his father.



**ARTHUR CHRISTMAS  
OR PUSS'N'BOOTS**  
**Friday 23<sup>TH</sup> Dec 1pm (matinee)**  
**Sunday, 27th Dec at 7pm**



**Gary McCormick & Mayor Tim Shadbolt**  
**- Stand-up Comedy at its best!**  
**Monday, 2nd January at 8pm - live on stage**

**IN BETWEENERS**  
**Friday 6<sup>TH</sup> January at 7pm**  
**Sunday, 8th January at 7pm**



**SPYKIDS**  
**Wed 11<sup>th</sup> January at 1pm (matinee)**



**I DON'T KNOW HOW  
SHE DOES IT**  
**Wed 20<sup>th</sup> January at 7pm**  
**Friday 22<sup>nd</sup> January at 7pm**



# Cue Theatre casts 'The Great Gatsby'

Director Marge Arthur  
has announced the cast of  
'The Great Gatsby' by Ken  
Duncum, which is the next  
production at Inglewood's  
Cue Theatre.

"I have had the good  
fortune to be able to cast 'The  
Great Gatsby, not only with  
strong talent, but also with  
a number of actors who are  
either relatively fresh on  
the local theatre scene, or  
who are brand new to the  
Taranaki region," said Marge  
Arthur.

"This augurs well for this  
production, as it does for  
theatre as a cultural force in  
Taranaki."

Included in the cast are  
tertiary graduates of theatre  
and film, actors who played

prominent roles in the New  
Plymouth Operatic Society's  
recent productions of '42nd  
Street' and "Ready to Rock",  
and several top students who  
are either studying or have  
studied drama as an extra-  
curricular subject.

The cast is: Cameron Curd  
playing Jay Gatsby; Mi-  
chelle Rawlinson as Daisy  
Buchanan; Travis Graham,  
Tom Buchanan; Hendrikus  
De Vaan, Nick Carraway;  
Katherine Whaley, Jordan  
Baker; Erik Keen, Older  
Nick; Trudie Ashford, Myr-  
tle Wilson; John Bellomo,  
George Wilson and Kather-  
ine Wolfe, Tracee Pigott and  
Tanaka Utete are all playing  
character roles.

The set design has already

been completed by Cue  
Theatre's set designer and  
builder Alan Stevenson and  
will result in a set which is  
aesthetically stunning and  
theatrically exciting, Arthur  
said.

The choreographer is  
well-known New Plymouth  
dancer and member of Val  
Deakin Dance Theatre Da-  
vina Moffat and the resulting  
dance scenes promise to be  
spectacular.

"The Great Gatsby" opens  
on Tuesday 20<sup>th</sup> March and  
runs till Saturday 31<sup>st</sup> March

- Jo Hills: Taranaki  
Daily News. Reprinted with  
permission of Taranaki  
Daily News.



# Waxeyes in the snow photo takes top prize



**Jocelyn Barrett receives the \$50 voucher from Stratford Art Society vice-president Christine Smith.**

The winner of the Percy Thomson Gallery 'The Big Snow Scrapbook' Viewers' Choice competition was local photographer Jocelyn Barrett.

The photo titled 'Waxeyes In The Snow' was an outstanding favourite with the scores of people who visited the local exhibition, held from 20 December to 16 January. 'The Big Snow Scrapbook' spotlighted the once-in-a-hundred-years snowstorms of August 2011. It was well supported with more than 200 photos on display. Photos were varied, from winter wonderland landscapes to personal portraits. Jocelyn was thrilled to win the prize, a \$50 voucher donated by the Stratford Art Society. Many photos from the exhibition will be uploaded to the Percy Thomson Gallery's Facebook page.

**Littoral drift - five Wanganui artists**  
explore the South Taranaki coast from Hawera to Kai-Iwi through the mediums of paint, crayon, glass, clay and porcelain



**20 Jan - 9 Feb 2012**



**Through the lens of a volunteer in Cambodia**  
A photo exhibition by Rosalie Adams capturing village life in Cambodia

Stratford  
p 06 765 0916

**Percy Thomson Gallery**

[www.percythomsongallery.or.nz](http://www.percythomsongallery.or.nz)  
[www.facebook.com/percythomsongallery](http://www.facebook.com/percythomsongallery)

## Cambodia in all its glory

20 January- 9 February 2012. In the Percy Thomson Community Gallery, concurrently with Littoral Drift features 'Through the lens of a Volunteer in Cambodia; Rosalie Adams.'

Rose has recently returned from a stint in Cambodia where she was assisting an aid group, VPO now Que

Rico Volunteer Project Overseas; renamed Que Rico. It was formed in 2003 to support children with burns in Bolivia directly. Since then work focuses 95% on Cambodia with a small programme working with street kids in Uganda.

"We are not a big multi-national NGO, no politics,

policy change - we work with local people to deliver change.

Our vision: Unleash the potential of people and communities around the world to make positive change happen and to see the end to poverty in all its forms."

Rose's powerful images capture many aspects of vil-

lage life, amazing colours, and activities of both young and old - delivering a glimpse of what life must be like in a small Cambodian village.

Rosalie will also be guest speaker at the Stratford Art Society AGM 7.30pm Wed 8 February, in the Percy Thomson Gallery, Stratford - all welcome.

## Hawera Repertory Society announces their productions for 2012

The first production of the year will be Dirty Dusting by Ed Waugh and Trevor Wood to be directed by Samantha Turner. When three cleaners, Olive, Gladys and Elsie, are threatened with redundancy they feel that their lives are coming to an end until a chance wrong number gives them a new business start-up idea - why not run a telephone sex line? They've got motive, opportunity and a lifetime of experience - some more than others, mind you.

Provided Elsie can teach the other two a few new tricks there's no reason why they can't get rich quick providing they can keep their operation a secret from their bosses... and their husbands... and their children... and their grandchildren. Auditions will be at the beginning of April with performances at the end of June. The end of year production will be Little Shop of Horrors to be directed by Shaun Campbell. This is a rock musical by

composer Alan Menken and writer Howard Ashman. Seymour works at a flower shop, attending a plant who he has named Audrey II (after the love of his life, Audrey). However, his plant is no normal plant. It came from outer space and requires a diet of fresh blood. Seymour starts by giving the plant his own blood, but, when people start dying, the plant wants more than a few drops of blood. Performances at the be-

ginning of November.  
*Publicity Officer*

**'CREATIVE CLEARANCE'**

Exhibition runs from Jan 23 - Feb 17.

Quality art at discounted prices.

**THE VILLAGE GALLERY**

Open Monday-Saturday 10am - 3pm, 166 High St, Eltham

## Adult Community Education

### TERM 1 COURSES OUT NOW!

Learn a new skill, meet new people and have some fun!

#### ART & CRAFT

Take up a new hobby or interest

#### COMPUTING

Catch up with technology or further your existing skills

#### ESOL

Improve your speaking, listening, reading and writing if English is not your first language

#### FITNESS & WELLBEING

Keep your body fit and enhance your quality of life

#### IN THE KITCHEN

Experience fabulous cooking and great recipes of the family or entertaining

#### LANGUAGES

Learn a new language and culture, or further develop language skills you already have

#### GENERAL INTEREST

Improve self-knowledge, develop talents and reach your potential



**ACE Taranaki**  
Adult Community Education

E: [ace.taranaki@xtra.co.nz](mailto:ace.taranaki@xtra.co.nz) | Ph: 0800 223 827

[www.acetaranaki.ac.nz](http://www.acetaranaki.ac.nz)

Visit our website to see what's on offer and to enrol online

**Tawhiti Museum**  
and the new attraction -  
**Traders & Whalers**  
A stunning new attraction at the museum  
- a dark ride into Taranaki's exciting past.

"Absolutely stunning.  
I was totally blown away"  
John Key, Prime Minister

**Normal Hours:** Open every Fri, Sat, Sun, Mon 10am-4pm  
**Summer:** Open every day from Boxing Day to end of Jan.  
**Winter:** (June, July, Aug) Open Sundays only.

401 Ohangai Road, Hawera.  
email: [info@tawhitimuseum.co.nz](mailto:info@tawhitimuseum.co.nz) website: [www.tawhitimuseum.co.nz](http://www.tawhitimuseum.co.nz)





**Oakura Pharmacy**  
your coastal community pharmacy

**Surf Highway 45,  
Oakura Ph (06) 752 7557**



Staff: from left to right Christine (Shop Manager), Rebecca (Assistant), Jade (Technician), Jin (Pharmacist), Minnie (Pharmacist, absent)

## What we do!!

Prescriptions  
First aid  
General OTC medications  
Health Supplements  
Gifts

ECP (Emergency Contraceptive Pill Provider)  
Ear piercing \$20 including a pair of earrings and antiseptic solution.

Blister packs (weekly pick up with more than 5 medications NO charge!!, monthly \$3.50 per pack!!).  
Free Delivery if pick up is from the FOUR SQUARE at Okato and Rahotu).

**SUN LOVERS**  
**10% off all HATS and SUNSCREENS in store**

## Opening Hours

Mon – Fri: 8:30 am – 5:30 pm

Sat : 9:00 am – 12:00 pm (during summer time)



We start all specials from 30th of Jan in 2012

## BACK TO SCHOOL SPECIALS

15% off all  
HEADLICE products  
15% off all  
WORMING treatments

**Bioglan Kids Smart Vita Gummies – 1) Vitamin C + Zinc,  
2) Multi Vitamin + Vegies & 3) Omega 3 Fish Oil - \$22.99 each**  
**IN STORE PROMOTION**



**Thompson's Fish Oil 1500mg  
(200 caps) + Glucosamine  
1500mg (180 caps) \$99.99 –  
usually \$143.00**

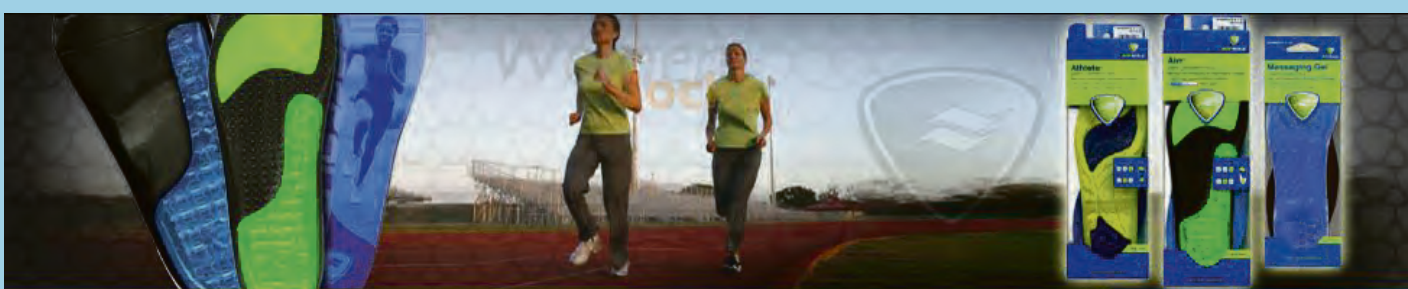
## NEW PRODUCTS JUST ARRIVED IN STORE



**SOFSOLE**

SOFSOLE – Come in store and check out our great new range of insoles and orthotics.

**Something here for everyone!!!**





# Sounds in the Sand

The South Taranaki District Council's events team is bringing music to Opunake Beach on Sunday 12 February from 1pm.

"It's going to be a great afternoon," says event organiser Jody Bloor. "Hopefully we get great weather like we did last year - so come along, bring the kids and a picnic. Sit back and relax enjoying the sounds from the band 'Hard Candy' and the waves crashing on the beach."

Hard Candy vocalist and guitarist Karen Clarke says the band's music is an upbeat blend of country rock and blues with elements of boogie and swing.

"It's a big sound with a whole lot of punch that'll take you up country, down river and back home again," she says.

The five members of Hard Candy are coming from all over the lower North Island to perform in Opunake.

Renowned finger picking blues exponent Bob Cooper-Grundy from Wairarapa fires up the front line, and locals may well recognise Taranaki-based drummer Wayne Morris from Gumboot Tango.

"We look forward to a great picnic atmosphere at the beach," says Kapiti-based Karen.



**RIGHT:** Blues Guitarist Bob Cooper Grundy will be performing at Opunake Beach Sunday 12 February



**06 274 8506**

33 SOUTH ROAD, MANAIA

We have fresh lemon fish,  
Mr Chips Chips and Chicken & Chips.  
Burgers and Toasted Sandwiches.

**Hours: Tues-Sun  
11.30am-2pm, 4-8pm**

## I'm here to help

"I'd like to support this community," says Jin Kim who bought the Oakura Pharmacy at the end of November last year - adding that he hopes the community will support the pharmacy.

A qualified pharmacist, Jin had been managing the pharmacy since April 2011. His wife, who is also a pharmacist, is also helping out in the business though she already works full time at the Vivian Pharmacy in New Plymouth.

Jin and his wife have been in Taranaki for three years and like the region. "We would like to stay in the Taranaki area," says Jin. Previously they were living in Auckland where Jin's parents settled after moving to New Zealand from South Korea.

He trained as a pharmacist at Otago University

which is where he met his wife, a fellow student.

It is the first time he has owned a business and Jin says "It's great," commenting of Oakura "I like this town and people."

He was not however drawn to the area for its surfing reputation and says he prefers indoor sports - ticking off badminton and ten pin bowling. He also enjoys the occasional game of baseball with friends.

Auckland was "too busy," he says, also he feels there is more opportunity in a rural area.

His family moved to New Zealand from Korea 17 years ago and having spent more than half his life in New Zealand now, Jin feels it is home.

"It's a very different lifestyle," from Korea he says which is "very busy and competitive". Everything changes so fast he says re-

ferring to technology and fashion.

He likes the fact that things are much slower in New Zealand where people don't notice what you wear and what you drive... and relaxed.

There's also more leisure time he says saying that Koreans his age work on average around 65 hours a week.

Though there is no restriction on the number of children people can have in Korea, many couples opt to have just one child for financial reasons.

"Education is expensive in Korea," he says and there is a lot of pressure.

At 16, his last year in Korea, he was doing 16 subjects that year - everything from Chinese, to English, music and drawing. Classes began at 7:30am and finished at 10pm. He also recalls they were not allowed to use a calculator. It was much

more strict in Korea with class sizes averaging 45 pupils. You listened to the teacher, he said adding he was amazed at the attitude of the New Zealand students when he came here. There was no chatting and answering back to teachers.

It was also hugely competitive with only the top 5% making it to a good university.

Jin admits though that, despite the more relaxed pace in New Zealand, he struggled for the first five years - chiefly with the language.

Since buying the Oakura Pharmacy Jin has extended the opening hours, opening on a Saturday morning. There have also been some staff changes.

He has also extended the product range - adding new products such as Radiance vitamins and he is stocking more natural products. He is continuing to add to his product range.

"If we don't have it we'll try and get it so people don't have to travel to town," says Jin - adding if anyone has any questions about medication they're welcome to come and ask.

"I'm here to help."

## Life Begins at 50 EXPO



*It's all about "What to do for the rest of your life!"*

**Thursday 16 February 2012  
At TSB Hub**

**From 10.30 am to 2.30 pm**

*Come along and see what is available for your next fifty years!*



## Sounds on the Sand

**Sunday 12 February, 1pm  
Opunake Beach**

**Come along, sit back and relax and listen to the sounds of 'Hard Candy'**

After a day at the beach, head to Opunake's Everybody's Theatre at 7pm to watch the musical 'Footloose' (M) - tickets only \$8!

**For more information, contact South Taranaki i-SITE Visitor Centre**  
Phone (06) 278 8599 or tollfree on 0800 111 323  
or visit [www.southtaranaki.com](http://www.southtaranaki.com)



## TARANAKI'S 4WD CENTRE - QUALITY & SERVICE

<p><b>NZ NEW</b> <b>\$79,990</b></p> <p><b>07 RANGEROVER SPORT</b> 3.6 V8 T/DSL. auto, p/s, full spec, black with black leather, T/bar. NZ New.</p>	<p><b>SUPERB</b> <b>\$67,990</b></p> <p><b>07 AUDI Q7 4.2, V8</b> Auto, p/s, full opts, "NZ New", 72km, Smoke Grey.</p>	<p><b>AS NEW!</b> <b>\$54,990</b></p> <p><b>04 PORSCHE CAYENNE S V8</b> 4WD, 5 dr, ABS, a/c, CDs, c/control, elects, p/s, s/roof, towbar, traction control. Leather, 73km, Tiptronic.</p>	<p><b>STUNNING</b> <b>\$86,990</b></p> <p><b>08 BMW X5 3.0</b> Twin T/DSL, Tip, p/s, a/c, a/bags, 56km, (NZ), Motorsport spec. Stunning in black.</p>	<p><b>IMMACULATE</b> <b>\$56,990</b></p> <p><b>06 LANDROVER DISCOVERY HS 4.4 V8</b> Auto, p/s, leather, alloys, 7 seater, 72 km. Immaculate in Polar White.</p>	<p><b>NZ NEW</b> <b>\$39,990</b></p> <p><b>07 NISSAN PATHFINDER 4WD</b> 2.5, T/DSL auto, ABS, a/c, a/bags, alloys/mags, CDs, c/l, c/control, c/control, 7 seater, NZ New 74km.</p>
---	---	---	---	---	--

**H Hareb Deken Motors**

RMVT

**TARANAKI'S 4WD CENTRE - VISIT [www.harebdekenmotors.co.nz](http://www.harebdekenmotors.co.nz)**

331 St Aubyn St • New Plymouth Ph (06) 759-9943  
**FREEPHONE 0800 289 493**

A/H Mike Hareb (06) 752-7697

Ton Deken (06) 752-7405

RMVT



## Through the Lens Exhibition hits Manaia

Manaia, we need your help. Help that is, to gather information about South Taranaki's past as told *Through the Lens*.

*Through the Lens – Town 'n Around*, is an exhibition that features a selection of historical photographs from the col-

lection of Aotea Utanganui – Museum of South Taranaki. This is the third in a series of *Through the Lens* exhibitions to tour libraries and galleries throughout the district and opened at Manaia LibraryPlus on January 19.

Aotea Utanganui's District Archivist, Cameron Curd

says the community can play an important part in contributing important information about the photographs on display.

"You may know something about the homes or businesses featured in the photographs, helping to add valuable information to the Livingston Baker Archive," he says. "You may have lived or worked at one of these places or you may have even owned one – we would really appreciate any information you can tell us about these places, as they are so important to our collective memory".

All photographs in the exhibition focus on the homes or businesses of South Taranaki and are available to purchase by contacting the District Archivist.

The exhibition will run in Manaia until 10 April and continue to tour the district's LibraryPlus centres throughout the year.

## Creative Clearance



Curator Maree Liddington especially likes this exhibit 'Evening Comes' by Liz Hart.

The Village Gallery, Eltham has an exhibition with a difference – and the difference means art at bargain prices. Curator Maree Liddington has invited all her members to submit up to 10 pieces of art which have been in their respective studios for quite a while. The idea is to allow her artists to have a kind of clearance, with one proviso – all art must have substantially marked down prices. For example, one exhibit Maree especially likes was originally priced at \$195, but is now on offer at the mouth-watering price of \$80. This represents a saving of over 100%. The painting in question is called 'Evening Comes' and the artist is Liz Hart. "Why does Maree like it? "Just the lighting in the skies and shadows in the hills – it's really nice". Maree thinks it was painted

in the Kaikoura area.

The exhibition runs from January 23 until 17 February.

There is a comprehensive range of art already ready for display, with more coming in all the time. Most appealing is a series of "whimsical" paintings by Ian Littlewood. Maree has gathered up some of her exquisite tapestry and felted pieces for display. Especially eye-catching and appealing is 'Cinderella's Shoe', created from glass and mirror tiles by Cherol Filbee.

If the exhibition is a success, Maree thinks it may become an annual event. The Village Gallery is open Monday to Saturday from 10am until 3pm. Don't miss it – here is your chance to purchase original art at very reasonable prices. Remember, last day of the exhibition is Friday February 17.

## Help, Opunake Players needs you

The players are in dire need of some new faces. We are trying to cast three short one-act plays. No big parts! An ideal opportunity for anyone even vaguely interested in acting or set building, or set painting, or set shifting, or sound, lighting, makeup etc to have a go.

For further information contact any of the following:

Helen Duff (06) 761-7594, Mike Smith (06) 761-8339, Suzie Stanley (06) 761-8879, Jen or Peter Trolove (06) 761-8998.  
Publicity Officer

*The Great Taranaki*  
**WILD WEST BIKE FEST 2012**  
29 JAN - 29 FEB

**Featuring**  
**BIG BIKE FIX** Sun 29 Jan  
Coastal Walkway - 10am-1.30pm  
**WILD WEST BIKE PARTY** Fri 17 Feb  
Huatoke Plaza - 6pm  
**METHANEX FAMILY FUN RIDE & MAYORAL CHALLENGE** Sun 26 Feb  
Ngamotu Beach - 9am

Pick up your Wild West Bike Fest event calendar from your local bike shop

**LET'S GO RIDING**  
WWW.LETSGO.ORG.NZ

**OPUNAKE Surf Inn**  
• **Tasman St, Opunake**  
• **Ph 761-8387**  
Your hosts: Jason & Carla

**THE PEOPLE'S PUB BRINGING LIVE MUSIC TO OPS.**

**LIKE us on Facebook**

<b>MON</b>	- FREE POOL
<b>TUES</b>	- FREE POOL, 2 PIZZAS FOR \$20 (Tight Arse Tues Are Back for Feb),
<b>WED</b>	- POKER NIGHT
<b>THURS</b>	- HAPPY HOUR & FREE BAR SNACKS
<b>FRI</b>	- FREE JUKE BOX & BAR SNACKS
<b>SAT</b>	- ANYTHING COULD HAPPEN!!
<b>SUN</b>	- FREE POOL & POOL COMP.

**~ Coming Up ~**

'KARAOKE' w Roxanne	Sat, 11 <sup>th</sup> Feb
'NGA-TAMA'	Sat, 18 <sup>th</sup> Feb
'MAROPU'	25 <sup>th</sup> Feb
'SOULOVUS'	3 <sup>rd</sup> March

More to be announced.

**BOTTLESTORE**  
**NEW PRODUCTS LOWER PRICES**

**REVAMPED MENU**  
With extra Pizza options & Kids Menu +

**Kids Corner to keep them occupied.**

With every main meal purchased, receive a **KID'S MEAL** for **FREE\***  
(\*conditions apply)



## THE CHALETs AT



Take in the sweeping views of the Coastline looking out over the Sugar Loaf Islands from the upstairs balcony while enjoying a glass of wine.

The Chalets at Okurukuru provide the perfect getaway for a romantic weekend.

Each chalet is spacious with open plan lounge and large screen TV.

**\$275 per couple, per night, including in-room continental breakfast.**  
RESTAURANT OPEN FOR DINNER AND LUNCH.

738 Surf Highway 45, Oakura, Taranaki  
Phone/Fax (06) 751-0787  
www.okurukuru.co.nz

See Rosie and her team

**BACK TO SCHOOL**

**GREAT PRICES & RANGE - for all stationery see us today.**

**Pastimes**

87 Tasman St, Opunake  
• Ph (06) 761-8151

Look out for our next issue on  
**February 9**